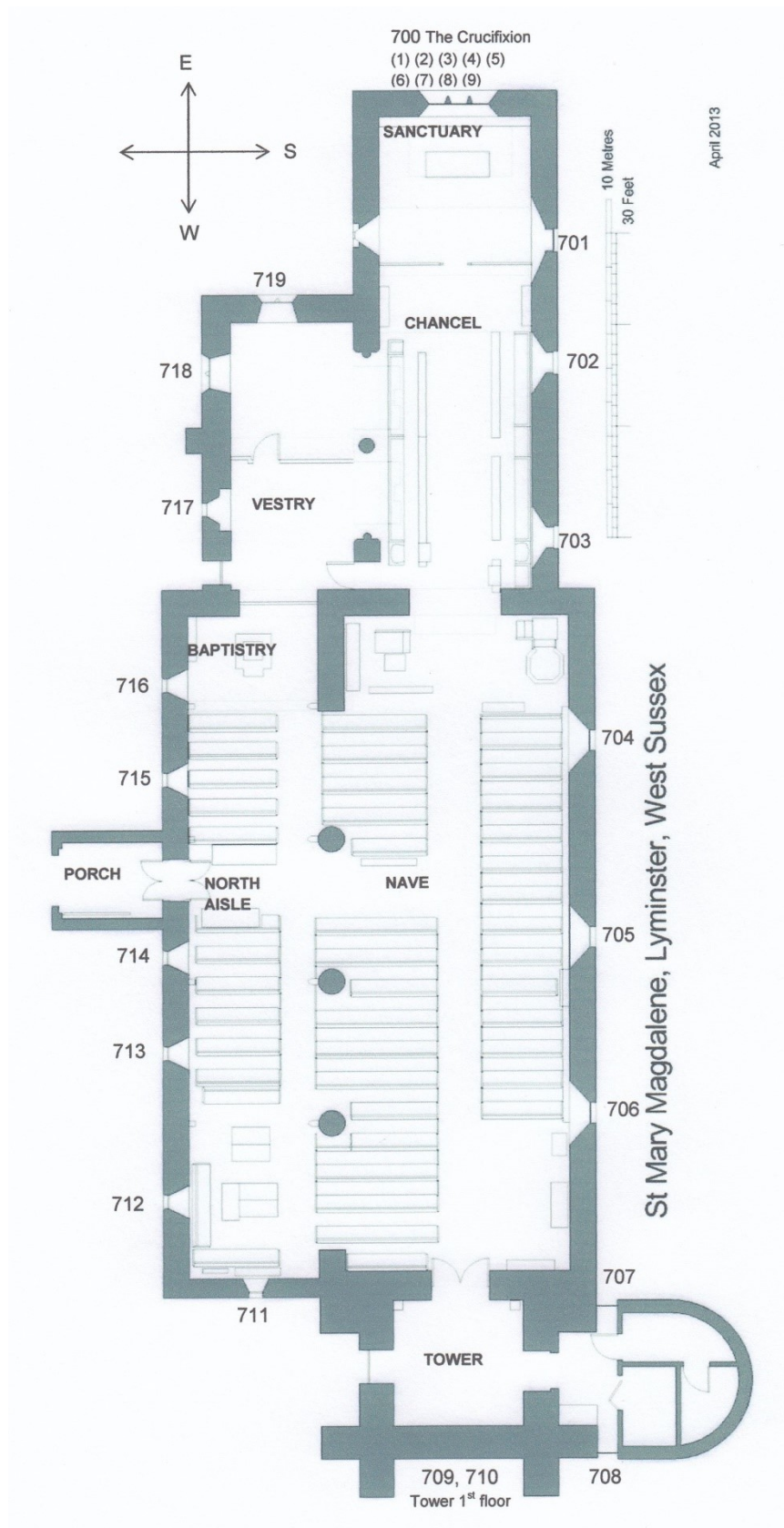


St Mary Magdalene  
Lyminster  
West Sussex

7 WINDOWS

# ST MARY MAGDALENE, LYMINSTER

## WINDOWS



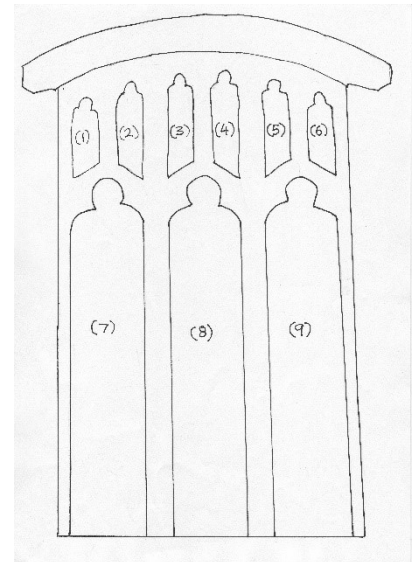
The condition of items in this Section appears to be satisfactory unless otherwise stated.

**700 EAST WINDOW OF 3 LIGHTS AND 6 TRACERY LIGHTS** Phs

**Sanctuary**

**1 Stonework**

The East Window is Middle Gothic/Perpendicular work made of Hythe Sandstone dating from c15th. Under a four piece Flattened Arch which has been repaired at the centre point there are 6 tracery lights each rising to a rounded trefoil shape, with three main lower windows of panelled tracery. The windows are separated by two narrow stone shafts running from top to bottom and the base is obscured by the central arches of the Reredos. The window is not centralised on the East Wall.



**WINDOW – THE CRUCIFIXION** (ref a) (ref b)

**TRACERY LIGHTS (1) – (6)**

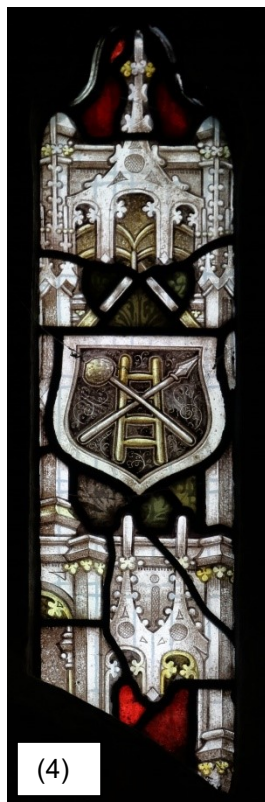
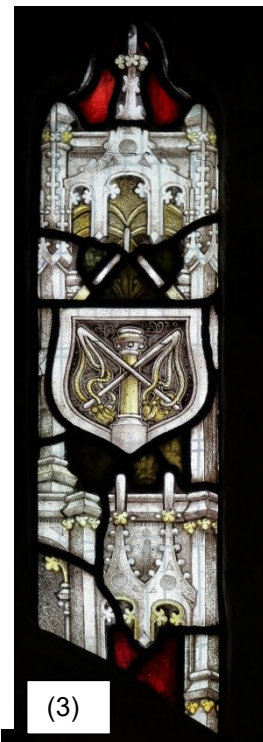
Comprising six rounded trefoil headed lights with diagonal shaped bases as photo/drawing. All have architectural surrounds with central shields. Architectural surrounds 1 and 6 are similar although in reverse order, as are 2 and 5 and 3 and 4

- (1) Architectural surround with red background behind the shield which contains the Sacred Monogram (IHC) in Greek (ref c), the first letters of the spelling of Jesus IHOCYC.
- (2) Architectural surround with red background behind the shield which in the centre depicts an eagle representing John the Evangelist.
- (3) Architectural surround with green background behind the shield which in the centre depicts scourges crossed in front of a pillar which were used to whip Jesus on the way to the cross - Mark 15 (ref d).
- (4) Architectural surround with green background behind the shield which in the centre depicts a ladder with a sponge on a reed crossed with a spear which is a sign that vinegar is offered as a drink when on the cross – John 19 (ref d).
- (5) Architectural surround with red background behind the shield which in the centre depicts a peacock which is a sign of immortality – Revelations 4.6 (ref d).
- (6) Architectural surround with red background behind the shield which contains the letters XPC (Chi Rho which are the first two letters of the Greek word for Christ) (ref c).



700





**MAIN LIGHTS****THREE ROUNDED TREFOIL HEADED LIGHTS (7)-(9)**

(7) Ornate Architectural canopy surround with a decorative border with a red background and a central crown. There is a plain glass fillet border to the window which also matches the canopy in window (9). Below is a predella depicting a large green tree in front of a blue sky and a rural scene of hills and fields. Two figures are in the foreground. The female figure (Mary) on the right is wearing a blue robe and white cloak embossed with gold with a gold and white nimbus. The male figure is wearing a red robe with a white cloak embossed with gold and has a silver nimbus. He is standing on a step with his hand on her left shoulder. The ground is covered with foliage.

(8) Ornate Architectural canopy surround with a decorative border with a blue background with a central scroll with word 'INRI' Iesus Nazarene Rex Iudaeorum (Jesus of Nazareth, King of the Jews) (ref c). There is a blue sky background and below is a city with temples and palm trees, purple hills and yellow light with a green rural and foliate background. In the centre of the window is Christ on the wooden cross with silver and gold cruciform nimbus wearing a loin cloth and showing wounds on his chest and nails in his hands and feet. A female figure (Mary Magdalene) with flowing golden hair and wearing a red robe with white sleeves and a silver nimbus is in a state of distress with hands clasped bowing at the foot of the cross. One white shoe is showing and an urn next to her at the foot of the window.

(9) Ornate Architectural canopy surround with a decorative border with a red background and a central crown. There is a plain glass fillet border to the window. The background predella is blue sky, evergreen trees and rocky ground. The city is shown on the left of the window. Two female figures, one standing in the foreground and one sitting behind. The figure on the right has a golden nimbus and wears a blue robe and white cloak her left hand is to her face covered by her cloak, her right hand is clutching her cloak around her. The female figure on the left is slightly behind, sitting on a rock, with her hands crossed over her breast. She is wearing a gold top and a red skirt. She has a silver nimbus and her eyes are closed. Both are at the entrance to the tomb.

There are two inscriptions running across all three main lights, the first saying 'Be of good cheer I have overcome the world' in Gothic script (John 16:33)(c) There is a second inscription in Gothic script at the bottom in Latin saying 'Ad Majorem Dei Gloriam et in Memoriam 1899. (For the Greater Glory of God and in memory 1899) (ref e).





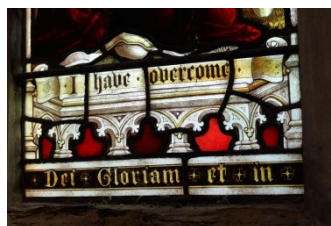
(7)



(8)



(9)



- 2 Stained and painted glass and lead
- 3 Window surround C15, Glass 1899
- 4 -
- 5 Heaton, Butler and Bayne. (ref b)
- 6 Heaton, Butler and Bayne. (ref b)
- 7 -
- 8 -
- 9 -
- 10 a) Church Stained Glass Windows recorded by Robert Eberhard updated Jan 2016.  
Inside Churches P18 version 2001  
b) Heaton, Butler & Bayne Catalogue 1902  
c) Inside Churches 1993 p. 24  
d) Cruden's Complete Concordance to the Old and New Testaments  
e) Website - dictionary.com accessed 07/01/19

**701 LANCET WINDOW**

Phs

**Sanctuary**

- 1 **Stonework:** On the south wall of the Sanctuary is a single window surround of Hythe Sandstone (ref a) set beneath a pointed arch located to the right of the altar. H. 242 (approx.) x w. 79cm with a sill 16cm deep. It surrounds a stained glass lancet window. The stonework is different to that of the other two windows in the Chancel. As part of the church improvements 1883-1896 under the direction of Mr Gordon Hill, architect, an existing window on the easternmost edge of the south side of the chancel was closed, with the opening of an old window on the South (ref b).

**Lancet Window - Nole Me Tangere (Touch Me Not)**

Lancet window of one light with stained and painted glass. Depicts Jesus appearing to Mary Magdalene in the garden near the sepulchre. He says 'Touch me Not' and she mistakes him for the gardener and when she recognises him says 'Rabboni' - Master. Window with gold and white decorative border and an elaborate architectural canopy with an angel either side with pinnacled shafts.

Scene in main part of the window showing walled city with blue sky, yellow and green foliate background. Two figures in main part of window, one standing (risen Christ with wounds in hands and feet) wearing red robe with cruciform nimbus and left arm outstretched with two fingers raised in blessing. A female figure (Mary Magdalene) kneeling before him wearing blue robe with yellow brocade sleeves and long flowing hair and gold coloured nimbus. The word 'Rabboni' (Master)(ref a) in gothic script runs above her head. Above that are two figures of nuns coming through the lych gate wearing red and blue garments with white headdresses. At the bottom of the window there is a basket, shovel and urn.

At the bottom on the left side above a lead strip is the glazier's mark of a wheatsheaf with a tower inside (Norman Towers) (Ph701A)



**Memorial**

On the South wall of the Sanctuary beneath the window is a brass rectangular memorial tablet inset into a mottled blue-grey granite rectangular stone which forms a substantial frame. (701B) Fixing screws are not visible through the face of the tablet. There has been some damage to the top of the granite frame on the left side, which has been filled with a grey filling. The bottom left hand corner of the granite frame has been trimmed. The backing stone is marble, possibly Tournai marble, also known as Belgian black marble. The incised V-cut lettering on the tablet is grey, and it is a mixture of upper and lower case in Gothic script, with a contraction.

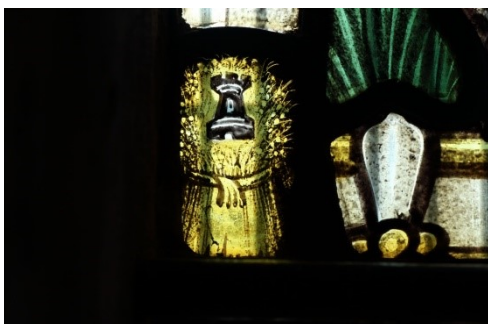


701B

- 2 Hythe Stones, Stained and Painted glass and lead
- 3 After 1909 (ref a)
- 4 Window - h. 211.6cm x w. inaccessible  
Brass Plaque - h. 14.25 x w. 45.5cm  
Stone underneath plaque - h. 21.5 x w. 53cm
- 5 Norman Towers
- 6 C E Kempe & Co Ltd
- 7 Dedicated in memory of Edward Carleton Holmes
- 8 Donated by the children of Edward and Elizabeth Carleton 1909
- 9 To the Glory of God and in memory of / Edward Carleton Holmes of Brookfield and / Elizabeth Carleton his wife, their children / dedicate this window. Anno Dm 1909
- 10 a) Website – Stained Glass Records, 25/06/16 Church Stained Glass Windows recorded by Robert Eberhard – updated Jan 2016  
b) WSRO EP/1/40/1910 Faculty 22 January 1910



701C



701A



701

## 702 LANCET WINDOW

Phs

Chancel, South Wall

1 **Stonework:**

Rear chamfered segmental arch made of sealed Bath Stone on the outside edge, machine cut with a granular texture (ref d) with deeply splayed whitewashed reveals edged with quoins. The surrounds to the lancet stained glass window are also of Bath Stone rising to a pointed arch h. 210 x w. 183cm, with a drop to the cill of 24cm. The cill itself is w. 182 x d. 42cm.

**Window:**

Two centred lancet window of one light with stained and painted glass. Window with architectural decorative border with blue sky and building in background. The window is described as 'Jesus Preaching' (sic) by H J Salisbury Manufacturer in Church Stained Glass Windows recorded by Robert Eberhard – updated January 2016 (ref a). However the scene is Paul the Apostle standing on steps preaching. Bearded figure with nimbus dressed in red robe with brown sash, green outer robe edged with gold coloured ribbon. Necklace with three gold oval shaped adornment. Hands raised in blessing. On the right are two children, a boy with red head band wearing light green robe and a girl with plaited hair and beaded headdress wearing a purple garment with brown sleeves. Behind them is a soldier wearing a helmet and holding a spear and there is a partly hidden face.

On the left there is a man wearing a plain headband and brown garment with arms folded. There are three partly obscured figures one with blue headdress, and one holding a crook. In the right foreground there is a woman wearing a blue dress and sand coloured shawl with gold edging. She has braided hair and a head band and is sitting on a purple cushion. The man on the left is dressed in red with a basket of grapes and there is a crook between them on the ground and bag. His red hat is next to the basket and there is a scroll on the steps.

Green floral background in between figures and at bottom of scene. The bottom panel has two praying angels, in white robes with gold wings and gold nimbus. There is gold floral and grape edging to architectural background. Between the angels there is an inscription in Gothic Script: 'He preached unto them Jesus and the resurrection' (Acts 17:18) (ref b).

Across the bottom of the window is a memorial dedication.

2 Stained and painted glass and lead

3 1927+

4 h.233.5cm x w. inaccessible

5 H J Salisbury (ref a)

6 H J Salisbury (ref a)

7-8 -

9

TO THE GLORY OF GOD

AND IN LOVING MEMORY OF LEWIS G.M.MACKAY 1853-1927

10 a) Church Stained Glass Windows recorded by Robert Eberhard – updated Jan 2016 accessed 25/6/16

b) Cruden's Complete Concordance to the Old and New Testaments.

c) WSRO EP/1/40 Faculty 19 September 1927

d) David Bone





702A

702



## 703 LANCET WINDOW

Phs

Chancel, South Wall

**Stonework:**

Rear chamfered segmental arch made of sealed Bath Stone on the outside edge, machine cut with a granular texture (ref c) with deeply splayed whitewashed reveals edged with quoins. The surrounds to the lancet stained glass windows are also of Bath Stone rising to a pointed arch, h. 210 x w. 183 with a drop to the cill of 22.5cm. The cill itself is w. 182 x d. 42cm.

**Lancet Window:**

Two centre lancet window of one light. With stained and painted glass. Window with decorative Architectural border with red background. The window is described as 'Good Samaritan' by Heaton, Butler and Bayne Designer and Manufacturer in Church Stained Glass Windows recorded by Robert Eberhard – updated January 2016 (ref a).

Scene – The Good Samaritan. There is a bearded man wearing a full length red robe edged with gold fringes and an embroidered belt with a pouch bearing a gold tassel and an ornate silver cloak lined with gold fabric and gold clasp. He is wearing a red turban hat with white and gold braiding. His left hand is resting on the shoulder of a half-naked man sitting partly covered by the train of his cloak. The standing figure is holding a silver flask. The seated bearded man is bare foot and looks forlorn and wearing no adornment. In the background on the right is a grey donkey with a gold saddle and bridle and reins embellished with gold and there is pink silk over the saddle. Above on the left is a male bearded figure wearing a white robe edged with yellow. He is holding a staff in his right hand, looking over his shoulder, beyond him are palm trees and fields and a city in the distance. Wording at the bottom in Gothic script 'Be Ye Kind One to Another' (ref b) (Eph 4:32).

- 2 Stained and Painted Glass and Lead
- 3 1900 onwards
- 4 h. 233.5cm x w. inaccessible
- 5 Heaton, Butler & Bayne
- 6 Heaton, Butler & Bayne
- 7 -
- 8 -
- 9 'To the Glory of God and in Memory of  
Apperton Lear born 20 March 1846 died 22 March 1900'
- 10 a) Church Stained Glass Windows recorded by Robert Eberhard updated Jan 2016  
b) Cruden's Complete Concordance to the Old and New Testaments  
c) David Bone



703A

703

## 704 LANCET WINDOW

Phs

Nave, South Wall

- 1 **Stonework:** A surround made of Caen Stone outer with a two centred pointed arch and deeply splayed limewashed jambs leading to an inner of Caen Stone with dark cement render at the top which frames the glass (ref b) Letter from Philip M. Johnstone, Architect, Nov 11th 1901. 'In the south wall of the Nave are two clumsy lancet windows at either end, and in the middle a somewhat singular circular opening fitted with a sexfoil cusping. These all date from about 1260 (ref c)

**Lancet Window**

Two centred Lancet window of one light with stained and painted glass. It has a decorative architectural border and blue background with pomegranate tree decoration at top of canopy with silver leaf trace border. Tree decoration at top of canopy. The window is described as 'Mary Magdalene' designed and manufactured by Heaton, Butler and Bayne in Church Stained Glass Windows recorded by Robert Eberhard – updated January 2016 (ref a).

Mary Magdalene with blue ornate nimbus and long flowing flaxen hair is wearing a white embroidered tunic with gold edging and a green cloak with gold coloured lining. In her right hand she holds a silver urn and her left hand is gathering up her gold lined cloak.

She is wearing gold coloured shoes with star of David pattern outlined in deeper gold colour. She is standing on a blue patterned tiled floor. There is a memorial inscription across the bottom of the window.

- 2 Stained and Painted Glass and Lead  
 3 1893  
 4 h. 206.5cm x w. inaccessible  
 5 Heaton, Butler & Bayne (ref a)  
 6 Heaton, Butler & Bayne (ref a)  
 7-8 -  
 9 TO THE GLORY OF GOD AND IN MEMORY OF / JEREMIAH LEAR DIED  
 SEP 1847 ,MARY LEAR DIED JULY 1850 / AND THEIR CHILDREN /  
 MARY WIFE OF EDWARD BLACKMORE DIED DEC 1890 / JOHN LEAR  
 DIED NOV 1862 GEORGE LEAR DIED JUNE 1891  
 10 a) Church Stained Glass Windows recorded by Robert Eberhard updated Jan 2016  
 Chichester Diocesan Kalendar 1894  
 b) David Bone  
 c) WSRO PAR 131/4/15





704



704A



705    **ROUNDEL WINDOW**

Phs

Nave, South Wall

1    **Stonework:**

A circular window surround of Caen Stone located high up on the South Wall. The foliated, lobed surround is splayed inside to admit more light. The outer rim is made up of 18 blocks. The outer is crisper and smoother, the inner which outlines the glass has bubbled slightly. 13c (ref c and d)



705A

**Window:**

Six sided sexfoil roundel window. The window is described as 'Angel' designed and manufactured by Heaton, Butler & Bayne in Church Stained Glass Windows recorded by Robert Eberhard. (ref a) There is a central blue foliate circle with six outer white foliate semi circles all with pearl-like beaded borders. There is also a narrow white and inner yellow circle in the background. The central scene is an Angel with white and gold nimbus, open gold coloured wings, dressed in a long flowing white robe. On her head she is wearing a diadem with a central patonce cross within a white and gold nimbus. There is a white scroll backed with gold draped across the centre of the window with Biblical inscription on glass in gothic script (ref b) (John 14:1, 27).

2    Stained and painted glass with lead.

3    —

4    h. 65.2cm x w. inaccessible

5    Heaton, Butler & Bayne (London) (ref a)

6    Heaton, Butler & Bayne (London) (ref a)

7 –

8 –

9 LET NOT YOUR HEART BE TROUBLED

- 10 a) Church Stained Glass Windows recorded by Robert Eberhard—updated Jan 2016  
b) Cruden's Complete Concordance to the Old and New Testaments  
c) WSRO PAR 131/4/15  
d) Medieval Church Architecture b Jon Cannon p55.



705

## 706 LANCET WINDOW

Phs

Nave, South Wall

1 **Stonework:**

The 13c (ref c) window surround next to the door to the Tower has a mix of stonework. The east side is Caen Stone, the west is a mix of Caen Stone and Lavant Stone which is rendered. There is a cement repair in the shape of a semicircle just above the glass. It has a pointed arch at the top with deeply splayed reveals and an inner surface rendered with plaster in very poor condition (ref b).

**Lancet Window:**

Lancet window of one light with stained and painted glass. The window is described as 'Virgin Mary and Jesus' designed and manufactured by Heaton, Butler and Bayne in Church Stained Glass Windows recorded by Robert Eberhard – updated January 2016 (ref a).

The window has a decorative architectural border with a red background. At the top there is a blossom with four pink flowers surrounded by green leaf canopy. There is an ornate border attached by rings on either side supporting a draped and patterned gold coloured material backdrop with gold fringe. Mary with a gold nimbus, is holding Jesus with nimbus, in her arms. She has shoulder length flaxen hair and is wearing a blue gown with white cuffs and a white cloak. Her right hand is supporting Jesus and her left hand is holding the cloak around him partly covering the child. She has bare feet and is standing on a red tiled floor. There is an inscription across the bottom of the window

2 Stained and painted glass and lead

3 1895

4 h. 208.7cm x w. inaccessible

5 Heaton, Butler &amp; Bayne (London)

6 Heaton, Butler &amp; Bayne (London)

7 -

8 -

9 TO THE GLORY OF GOD. ANNO DOMINI 1895

10 a) Church Stained Glass Windows recorded by Robert Eberhard updated Jan 2016

b) David Bone

c) WSRO PAR 131/4/15





706A

706



**707 KITCHEN WINDOW****Kitchen, E Wall**

- 1 Modern kitchen window (ref a) added to the church and to the south of the bell tower. The window is of plain glass in a dark grey metal frame divided by a bar at the east end of the kitchen, fitted over a buttress to fit the shape of the original wall of the church.
- 2 Plain double glazed glass and metal frame
- 3 2007 (ref a)
- 4 h. 198 x w. 57cm
- 5-6 -
- 7 A Faculty was granted by the Chancellor 2007 (ref a) Dedicated by Archdeacon McKittrick
- 8 -
- 9 -
- 10 a) Terrier

**708 KITCHEN WINDOW 708**

- 1 Modern kitchen (ref a) added to the church to the south of the bell tower. Window is double glazed of plain glass in a dark grey metal frame divided by a bar. It is at the west end of the kitchen fitted over a buttress on the original wall of the church.
- 2 Plain doubled glazed glass and metal frame
- 3 2007 (ref a)
- 4 h. 198 x w. 57cm
- 5-6 -
- 7 A Faculty was granted by the Chancellor 2007 (ref a) Dedicated by Archdeacon McKittrick
- 8 -
- 9 -
- 10 a) Terrier

**709 BELL TOWER LANCET WINDOW**

Phs

**Bell Tower Ringing Floor****1 Stonework:**

A 12C round arched window surround, h. 172 x w. 120 x d. 75cm on the South wall of the ringing chamber. Made of Sandstone with deep splayed reveals narrowing to a small lancet window. The reveals are of rough flint whitewashed over. Below the window there is a small wooden ledge which drops down to a trapezoid shaped sill. It has a bespoke 8cm high trapezium shaped padded seat cushion covered in dark red vinyl or Rexian fabric to fit the sill. The arch of the window is badly eroded.

**Lancet Window:**

A window on the South wall with diamond shaped quarries of clear yellow textured glass light with plain glass lozenge shape border and outer border of purple lozenge shape glass.

2 Stained glass and plain glass and lead.

3 -

4 h 48cm x w 30cm

5-10 -



709A



709

**710 SMALL LANCET WINDOW**

Phs

**Bell Tower Ringing Floor****1 Stonework:**

A 12C round arched window surround h. 166 x w. 120 x d. 69 on the North wall of the ringing chamber. Made of Sandstone with deep splayed reveals narrowing to a small lancet window. The reveals are of rough flint whitewashed over. Below the window there is are two stepped small wooden ledges which drop down to a trapezoid shaped sill.

**Window:**

A window on the North wall with one clear glazed opening light with diamond shaped quarries.

2

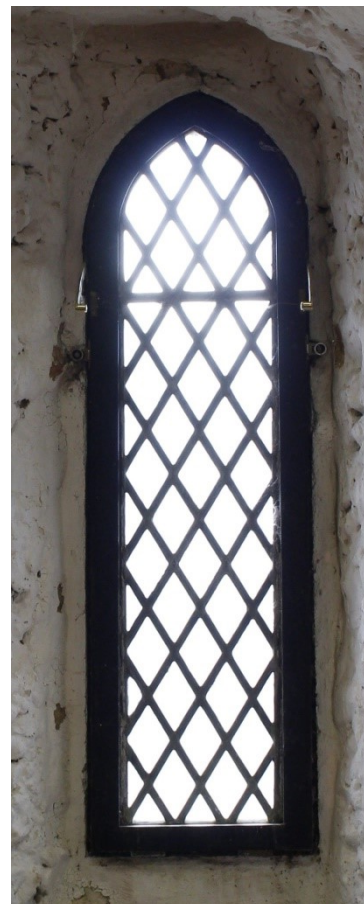
3

4

5-10



710A



710



**711 LANCET WINDOW** Ph **North Aisle, W Wall**

**1 Stonework - see 714.**

**Window** The window is clear glazed light of glass and lead with diamond shaped quarries. The bottom third is an opening window. .h. 106.2 x w. 38.1cm

**712 LANCET WINDOW** Ph **North Aisle, N Wall**

**1 Stonework - see 714.**

**Window** The window is clear glazed light of glass and lead with diamond shaped quarries. h. 106.2 x w.38.1cm.

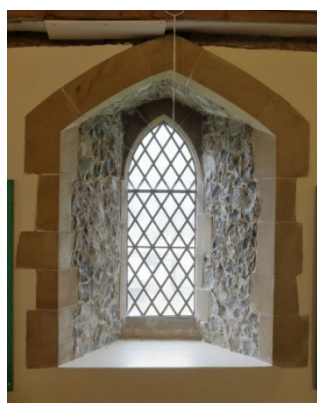
**713 LANCET WINDOW** Ph **North Aisle, N Wall**

**1 Stonework - see 714.**

**Window** - The window of clear glazed light of glass and lead with diamond shaped quarries. h. 97.7 x w. 38cm.



711



712



713

## 714 LANCET WINDOW

Phs

North Aisle, N Wall

1 **Stonework:**

The 6 windows of the North Aisle/Baptistry have a two centred rere-arch of Ardingly Sandstone with splayed reveal of flints with an opening of 96cm approx. at the front edge narrowing to the window arch. There are long and short quoins on each side. Measurements vary slightly per window.

711 - h. 170 x w. 96 x d. 59cm (West window)

712 - h. 131 x w. 96 x d. 56cm (North Aisle)

713 - h. 133 x w. 96 x d. 57cm (North Aisle)

714 - h. 131 x w. 96 x d. 67cm (North Aisle)

715 - h. 131 x w. 97 x d. 57.5cm (North Aisle)

716 - h. 150 x w. 95 x d. 60cm (Baptistry)

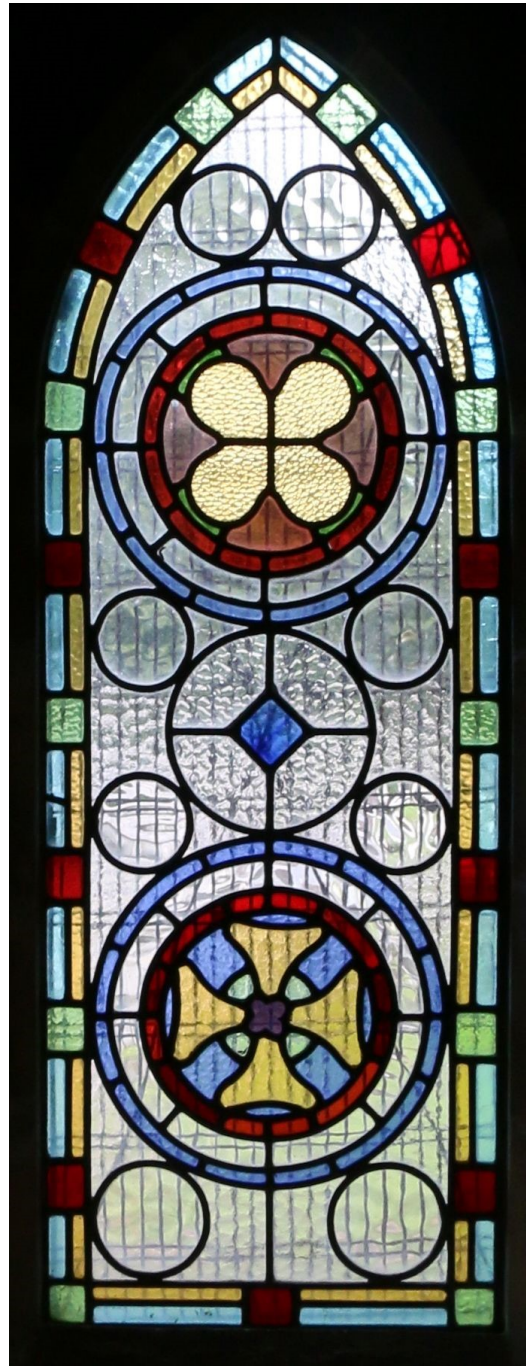
All the windows of the North Aisle, with the exception of the early one now blocked in its west wall (222) were renovated in the restoration of 1864, under Mr George Truefitt (ref b). Repair and restoration also took place in 1902. 'Sundry works Cut a small chamfer upon the internal arches of the seven lancet windows (modern) in aisle and vestry. Rake out joints of flintwork in splays and plaster the same, rendering with a coat of cement, and keeping the total thickness of the plaster about ½ inch. In like manner, plaster the soffits of the nave arches (B) raking out the joints to obtain a key, but leaving all the ancient stone dressings exposed.' (ref c).



714A

**Window**

Single light described as 'Ornamental' in Church Stained Glass Windows recorded by Robert Eberhard – updated January 2016 (ref a). The window has two borders of fillet glass. The outer border is blue glass and the inner yellow glass with red and green alternating squares across both borders. There are two large circles above each other. The outer border of the circles is blue glass and inner border red colour. The top circle contains a quatrefoil in yellow on a pink background with green inserts. The lower circle is a patée cross in yellow glass on a green glass circle with a purple centre and blue glass background. The centre of the light is a plain bevelled glass circle and blue centre diamond shape with four smaller clear glass circles connecting the centre circle and two larger circles. Two slightly larger circles of clear glass at the bottom of the window and two of clear glass at the top. The background glass is textured



714

- 2 stained glass and lead
- 3 -
- 4 h. 104.3cm x w. 37.9 cm
- 5-9 -
- 10 a) Church Stained Glass Windows recorded by Robert Eberhard – updated Jan 2016
- b) WSRO PAR 131/4/2
- c) WSRO PAR 131/2/1



## 715 LANCET WINDOW

Phs

Nave, N Wall

## 1 Stonework - see 714



715A

**Window:**

Single lancet light, divided into two scenes described as 'Angels Appear to Shepherds and Presentation' (sic)(ref a) in Church Guide recorded by Robert Eberhard, with plain glass fillet edge. Border of red glass with green and ochre yellow glass flower design between red glass. Top of lancet is a pelican piercing its breast to feed its young with its blood (a symbol of Christ's sacrifice on the cross) (ref b) with outstretched gold wings with red edges and blue back with trefoil white decoration. It is on a nest with three chicks within an oval white glass border. Below are two turrets divided by a canopy with a wall behind with pillars at the side.

**Upper scene: Angel appears to shepherds**

Grey wall background with a border of gold and white beaded canopy resting on pillars either side on a purple background. Inner patterned green border around top of scene. Blue sky background with Angel in top right hand segment dressed in white with golden hair, red nimbus with purple and red wings surrounded by gold light. There are three shepherds, one standing holding a shepherd's crook is wearing a green robe with gold lined white cloak. The kneeling figure is wearing a red hat and brown tunic with a hip flask and is wearing a white cloak with binding around his leg. The third figure is reclining on the grass wearing a red tunic with

black detail, his crook is on the ground beside him. In gothic script there is a quotation 'Blessed are the poor in spirit for theirs is the Kingdom of Heaven' (ref c) Matthew 5:3.

Lower scene: The Presentation

In a temple, the figure of Mary with red nimbus on the left is wearing purple gown, blue cloak and white head covering. In the centre the man holding baby Jesus is Simeon who was in Jerusalem when Mary and Joseph brought baby Jesus 'to present him to the Lord' - Luke 2: 21-32. (ref c) Simeon took the baby in his arms and blessed God and said 'Lord now lettest thou thy servant depart in peace' Luke 2:29. (ref c). Simeon is bearded and wearing red robes with white hood. The figure on the right is a bearded man (Joseph) with purple nimbus, wearing a green garment and white cloak. He is holding a box or cage under his cloak which would hold the traditional sacrifice of a pair of turtledoves or 2 young pigeons. In gothic script there is a quotation 'Blessed are the pure in heart for they shall see God' (ref c) Matthew 5:8. The window is signed Thos Baillie - 1874 London on the bottom right corner.

**Dedication.** There is a Slate dedication plaque under the window engraved in capitals followed by a Patée Cross and a biblical quotation in much smaller capitals from Hosea 14:7 (ref d) Ph715A.



- 2 Stained glass and lead  
 3 1874 as indicated in the slate inscription below window.  
 4 h.105 x w. 38cm  
 5 Thomas Baillie, London signed  
 6 Thomas Baillie, London  
 7 -  
 8 Thomas Baillie  
 9 **Slate Dedication under window:**  
 TO THE HONOR AND GLORY OF GOD THIS WINDOW WAS DESIGNED  
 AND EXECUTED BY / THOMAS BAILLIE OF LONDON AD. 1874 IN  
 AFFECTIONATE REMEMBRANCE OF DEARLY / BELOVED PARENTS.  
 BENJAMIN BAILLIE DIED DECEMBER 18<sup>TH</sup> 1864 AGED 77 YEARS AND /  
 WAS BURIED IN KENSAL GREEN CEMETERY. ALSO REBECCA  
 BAILLIE DIED OCTOBER 20<sup>TH</sup> 1873 / AGED 85 YEARS, AND WAS  
 BURIED IN THIS CHURCHYARD + THEY SHALL REVIVE AS THE CORN Hosea XIV .  
 10 a) Church Guide. 25.6.16 Church Stained Glass Windows recorded by Robert  
 Eberhard – updated January 2016  
 b) Inside Churches 1993  
 c) Cruden's Complete Concordance to the Old and New Testaments  
 d) King James Bible Online website



715B



**716 LANCET WINDOW** Ph**Nave, N Wall**

- 1 **Stonework - see 714.** There is a mason's mark on the side of the window surround (see Graffitti 224)

**Window:**

The window is a clear glazed light of glass and lead with diamond shaped quarries.  
h. 93 x w. 38.2cm.



716

**717 LANCET WINDOW** Phs**Vestry, N Wall**

- 1 **Stonework:**  
The vestry window to the right of the exit door has a wide segmental arch with deeply splayed jambs of two orders being partially whitewashed, the quoins being left exposed. The arch is cracked just east of the centre point. (Ph 717). Bath Stone with an inner surround to the lancet glass of Ardingly Stone (ref a)

**Window:**

The window can only be seen from outside the church. It is a clear yellow textured glass light with diamond shaped quarries with clear glass fillet edges and three saddle bars.

- 2 Plain glazed light and lead  
3 -  
4 h. 90 x w. 40cm  
5-9 -  
10 a) David Bone



717



717A External

## 718 WINDOW

Ph

Vestry/Organ Room N Wall

1 **Stonework:**

There are two hidden windows set in the organ room adjacent to the Vestry, one on the north wall and one on the east. The North window is boarded on the inside but the outside is of Hythe Sandstone with a sill which has been replaced with Bath Stone. The surround is h. 123 x w. 83.3 x d. 60.5cm. The two glass panes are separated by a chamfered mullion, each side rising to a weathered rounded trefoil shape below a two centred pointed arch, all within a rectangular chamfered stone surround. "A two-light 15<sup>th</sup> century window, originally in the south wall of the chancel was removed, at the restoration of 1883, to the Vestry on the site of the destroyed Lady Chapel" (ref a)

**Window:**

The window can only be seen fully from outside the church. There are two clear yellow textured glass lights with diamond shaped quarries with plain glass fillet border.

2 Plain glazed light and lead

3 15C

4 h. 90 x w. 40cm

5-9 -

10 a) Lyminster Parish and its Church by E. Carlton Holmes 1906



718



**719 LANCET WINDOW**

Ph

**Vestry/Organ Room, E Wall****1 Stonework:**

There are two hidden windows set in the organ room adjacent to the Vestry, one on the north wall and one on the east. The external surround of the window on the east wall is of Bath Stone. The two glass panes are separated by a chamfered mullion, each side rising to a rounded trefoil shape below a two centred pointed arch, all within a rectangular chamfered stone surround.

**Window:**

The window can only be seen from outside the church. It is a window with two lights divided by stone surround with rounded trefoil at the top of each light. Clear yellow textured glass lights with diamond shaped quarries with plain glass fillet borders. There is a small opening at the bottom of the right side.

2 Plain Glazed light and lead

3 -

4 Inaccessible

5-10 -



719 External

## 720 LANCET WINDOW

Phs

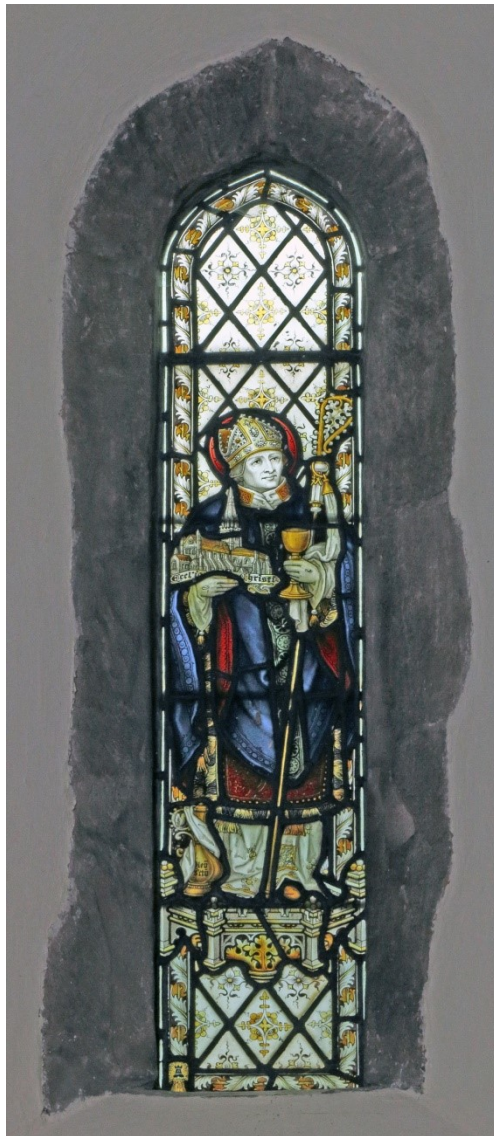
Vestry, N Wall

- 1 **Stonework:** A plaster surround with a Caen Stone outer with a pointed arch (ref c) following the lines of the lancet window. The length from the top of arc to bottom of sill is 210cm. Below the window is a blocked in doorway infilled with a mixture of stones which is only visible from the outside.

**Lancet Window:**

The window depicts St Richard. (ref a) recorded by Robert Eberhard – updated January 2016. Small lattice light with a border of white leaves on gold background. In the bottom left corner is a tower set within a wheatsheaf which is the emblem of Norman Towers of Kempe & Co Ltd 1908 (Ph 720A). The background of the light is grisaille glass with a decorative diamond pattern with a border of scrolled leaves and a vertebrate band continuous design of flowers, fruit or foliate with the main stem running through the centre. He is holding a model of Chichester Cathedral in his right hand and a chalice in his left. A gold Bishop's crozier is resting on the crook of his arm and across his left shoulder. There is stigmata on both hands. A scarf fringed in gold and black is hooked to the crozier and wound round his arm reaching to the ground. He is wearing a blue cape edged with grey and lined in red. A white gown with gold embroidery and he has a red nimbus and is wearing a silver and gold mitre and skull cap beneath. At his feet, partly covered, is a gold flask, words Dieu ... and a small dove in the curve of the handle of the flask.

- 2 Stained and painted glass and lead
- 3 1909
- 4 h. 80.3 cm & w. inaccessible
- 5 Norman Towers
- 6 C E Kempe & Co Ltd, 28 Nottingham Place, London
- 7 Insertion of stained glass window representing the figure of St Richard of Chichester alleging the cost would be borne and paid for by members of the Holmes family of Brookfield. Consent of the Governors of Eton College, the Lay Rector, had been obtained. Mr Holmes paid for the window in memory of his late father Mr E Carleton Holmes, Solicitor and Church Warden (ref b).
- 8 Mr Holmes
- 9 -
- 10 a) Church Stained Glass Windows recorded by Robert Eberhard – updated Jan 2016.  
b) WSRO Ep1/40/1910 dated 22 January 1910  
c) David Bone



720B

720A



720