

St Mary Magdalene
Lyminster
West Sussex

5 PAINTINGS etc.

The condition of items in this Section appears to be satisfactory unless otherwise stated.

500 ROYAL ARMS - NONE

501 HATCHMENTS - NONE

502 REREDOS Phs

SANCTUARY

- 1 The reredos is situated beneath the east window behind the altar and is a handsome 19th Century piece of stonework shaped in the style of an arcade (See Stonework 200) into which are set 12 oak oil painted panels. (ref a) Nine are the same overall size h.48 x w.17cm and depict the 4 Tetra morph/Evangelists Matthew, Mark, Luke and John together with 10 Apostles and Disciples, with five being situated on the left hand side of three larger panels in the style of a triptych depicting a Nativity scene size h.83 x w.48cm and four to the right. The Nativity has an apex arch over each panel linking the three together and supported by stylised Corinthian pillars in black marble. The smaller panels are shaped at the top with a Gothic-style trefoil arch and shields painted onto the middle of each trefoil have a symbol representing the Tetra morph, Apostle or Disciple beneath. Where there are two portrait heads shown on the same panel then the shield incorporates both symbols. The paintings are on gessoed oak panels with oil paint over gilt leaf and varnished.

The saints have a ribbon banner draped around each figure. These banners are folded and in segments. Some have the words from The Symbolum Apostolorum - The Apostles' Creed (shown below), but some are from the Bible.

"Credo in Deum Patrem omnipotentem, Creatorem coeli et terrea. Et in Jesum Christum, Filium ejus unicum, Dominum nostrum, qui conceptus est de Spiritu Sancto, natus ex Maria virgine, passus sub Pontio Pilato, crucifixus, mortuus, et sepultus, descendit ad infernos, tertia die resurrexit a mortuis, ascendit ad coelos, sedet ad dexteram Dei Patris omnipotentis, inde venturus est judicare vivos et mortuos. Credo in Spiritum Sanctum, sanctam Ecclesiam Catholicam, sanctorum communionem, remissionem peccatorum, carnis resurrectionem et vitam aeternam."

(I believe in God, the Father almighty, Creator of heaven and earth, and in Jesus Christ, His only Son, our Lord, Who was conceived by the power of the Holy Spirit and born of the Virgin Mary, suffered under Pontius Pilate, was crucified, died, and was buried; He descended into hell; on the third day He rose again from the dead; He ascended into heaven and is seated at the right hand of God, the Father Almighty; from there He will come to judge the living and the dead. I believe in the Holy Spirit, the holy Catholic Church, the communion of saints, the forgiveness of sins, the resurrection of the body, and the life everlasting.)

Starting with the first oak panel on the left hand side which has two Saints portraits one above the other, each a semi torso and each painted within a circular style gilt frame. The figures in the smaller side panels face either forward or towards the Nativity.



502

A Saint Peter is above and facing to his left. He is dressed simply in a pale blue undergarment and a dark red cloak around his shoulders. In his one visible hand resting on the edge of the gilt frame he holds a large golden key. His short brown hair is shaved in the style of a tonsure and he has a close brown beard. His head is surrounded by a golden nimbus. Inside the gilt frame surrounding him there is a banner ribbon with the words. ...
Credo in Deum omni Creatorem coeli et terra... (*I believe in the God the Father Almighty Creator of Heaven and Earth (ref b)*)

Saint Andrew is beneath and faces to the front with a golden nimbus over his head. He is dressed in a dark green robe with a cowl neck. He has long brown hair and is clean shaven. He holds a staff in his left hand and the ribbon banner encircles him with the words. Et in Jesum Christum filius ejus ... Dom (*and in Jesus Christ his only son Our Lord...(ref b)*)

The shield set on the trefoil above their heads shows a saltire cross, crux decussata, on a dark green background and a large golden key.



502A

ST MARY MAGDALENE, LYMINSTER

PAINTINGS

B Saint Matthew the Evangelist is set into a painted oblong upright gold frame and is a full length frontal seated figure dressed in a simple pale blue gown and wrapped in a red cloak over his right shoulder. He has cropped brown hair and a long, full beard. His head is surrounded by a golden nimbus. He supports a large green book edged in gold, upright resting on his knee held with his left hand. His robes gather on the green and yellow tiled floor. The ribbon banner which flows around his head has the words ...
Credo in Spiritu Sanctum Ecclesiam Catholicam
(*I believe in the Holy Spirit, the Holy Catholic Church*) (ref b) Part of the Apostles Creed

Below his feet and the floor is written very faintly SCS MATTHIAS.

The shield set above his head on the trefoil is that of the face of a winged angel on a dark green background with a gilt nimbus and six wings, three either side and the lowest two folded into each other



C Saint James the Great is above, torso facing to his left. Above his head is a golden nimbus and on his head he wears a hat with a shell on the left hand side. He has a short brown beard and downcast eyes. He is wearing a plain green undergarment only visible at the neck which is covered by a dark brown cowl necked cloak. In his right hand he is holding a reed and the ribbon banner has the words Spiritus qui conceptus est de ..Maria. (*who was conceived by the Holy Spirit....Mary*) (ref b) Part of the Apostles Creed

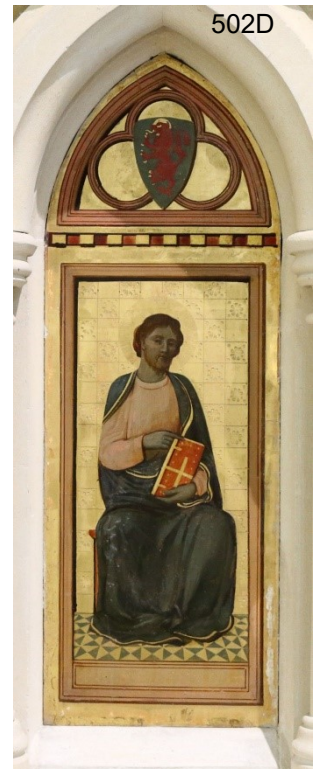
Saint John the Baptist is beneath and faces to his left. Above his head is a golden nimbus. He has short brown hair cut in a tonsure and a short beard. He wears a plain gown under a dark brown cape fastened at the neck by a golden clasp. He holds a slim wooden staff in the shape of a cross. The ribbon banner has the words a mortu ...Descendit ad infernos terra die. (*died and descended into hell*) (ref b)).

The shield set onto the trefoil above their heads shows a Latin cross with a shell in front on a dark green background.



D Saint Mark the Evangelist is set into a painted oblong gold frame and is a full length frontal seated figure wearing a pale pink gown and wrapped in a dark green robe edged in gold around his shoulders and falling to cover his feet which rest on a yellow and green chequered tiled floor. There is a faint outline of a nimbus around his head. He is resting a large red book with a gold spine, studs and a Latin cross upright on his knees in his left hand and supported by his right hand. Beneath him and the floor his name is written faintly SCS MARCUS on a gilt border.

The shield above his head set onto the trefoil is of a rampant lion painted red with gold claws extended on a dark green background.



E Saint James the Lesser above is semi torso and painted within a golden circular frame and is facing to the front. He has short brown hair and beard and is surmounted by a nimbus, he is dressed in a simple green gown with sleeves visible and a beige cloak. In his left hand he is holding a fullers club and his right hand is resting on the ribbon banner which has the words... ascendit ad coelos et dexter Dei Patris. (*"He ascended into Heaven and is seated at the Right Hand of God the Father Almighty"* (ref b))

Saint Jude/Thaddeus is beneath within a golden circular frame and faces to his left. . He has brown hair in a tonsure and is clean shaven. Above his head is a golden nimbus. He wears a dark red, cowl necked cloak and holds a javelin in his right hand resting on his right shoulder. The ribbon reads: Inde venturus est Judicare vivos et mortus. (*here he will come to judge the living and the dead.*) (ref b)

The shield above their heads set into a trefoil, shows a Fullers club crossed with a javelin on a dark green background.



F The nativity is a triptych of oak panels size h.83 x w.48cm situated in the middle of the reredos each under open trefoil arches supported by black marble Corinthian pillars. See Ph502.

The left panel has a background of gold metal leaf with foliage to the left and right and it depicts the Arch Angel Gabriel in the centre front kneeling with his hands together in prayer facing left to the crib in the next painting. He has a large golden nimbus around his head and wears a long cream robe with a gilt stole around his shoulders which reaches the floor and he has large blue peacock feathered wings at his shoulders. He has long curly brown hair and is clean shaven. His four acolytes stand behind him each with a golden nimbus. They all have neat brown hair and are clean shaven. The first on the left wears a full length red gown with gilt trimmings and full length wings of brown and green, the second acolyte wears a pale grey gown, the third wears a red gown with gold trims and the fourth wears a green gown with his right hand raised in blessing. Between them they are holding a gilt scroll with the words and musical notes "Gloria in excelsis" (*Glory to God in the highest* (ref b)). To the left of the Arch Angel Gabriel is a male figure with brown hair and beard standing holding a staff and wearing a calf length, red gown with a large heavy cloak around his shoulders, his legs and feet are bare. He is gazing towards the next picture. Beneath the painting is a scroll with the words...Eraseamus usq Bethlem videam. (*Let us go up to [Bethlehem] to see this* (ref b))



G The central panel depicts the Nativity. In rustic scenery Mary, seated under a wooden roof supported by bricks, wears a red under garment which is covered by a long pale blue cloak and veil with dark blue interlining. She supports and gazes at the Christ Child who is standing on her left knee swaddled but with bare shoulders, his right hand raised in a blessing. Around their heads are golden nimbi. On the left-hand side facing into the scene is an acolyte with brown hair, clean shaven with a gold nimbus over his head, he wears a loose, red garment with gold trimming and has his left hand held in a blessing. Standing on the right-hand side is a man with grey hair and long grey beard and a gold nimbus. He wears a grey gown with a long dark green cloak over his right shoulder and holds a wooden staff in his left hand as he gazes down. Kneeling at the left of the picture is a figure dressed in a simple grey gown with a black cloak lined in brown thrown back from his right shoulder and both hands are together in prayer as he gazes at the Christ Child. Kneeling on the right of the picture in homage is a man with grey hair in the style of a tonsure and a pointed grey beard. Behind his head is a golden nimbus and he wears a rich red full length cloak with a golden collar, in his hands he holds a gold coronet as he faces the holy family. In the foreground is an ornate gold vase with one stem of three white lilies directly in front of Mary. Beneath the painting are the words *Verbum quod factum est* (*and the word became flesh*) (ref b))



The metal leaf background is worn thin in parts and there is a scratch through to the gesso above the head of St Joseph. Top left and right at the points of the arch there is minor damage.

H . The right panel shows six figures grouped together against a rustic background, facing towards the Nativity. The first figure on the left of the picture is a heavily set man with brown shoulder length hair and with a golden nimbus behind. He wears a green gown and a heavy black tunic which is trimmed with gold coloured braid and fur at the hem. In his left hand he holds a large gold chalice supporting the top with his right hand.

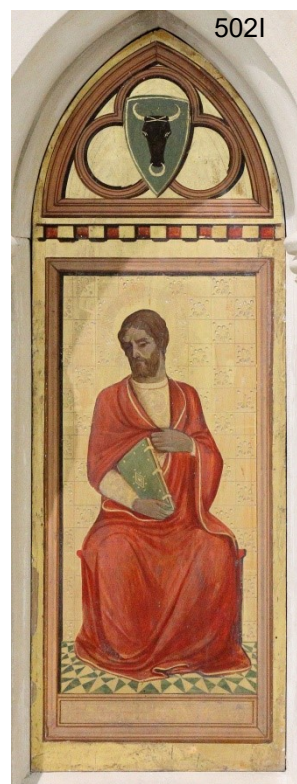
Behind him stand three acolytes all clean shaven, one wearing a black cloak with red trim held together with a gold clasp, the next to him wears a blue robe with gold at the neck, the third is fair haired and wears a rich red cloak over a gold tunic, in his hands he holds a small gold globe in the style of an armillary sphere. The page boy to the left of the acolytes has brown hair, a rich short red gown with gold belt and fur trimming over which he wears a blue tunic edged in gold and black hose. In his hands he holds a coronet. The main figure in the foreground kneels on his right knee in an act of homage. He has shoulder length brown hair with a gold nimbus behind, he wears a dark red ornate under garment topped with a rich red full length tunic lined with fur. Around his neck he wears a red ribbon with a gold medallion and three drop pearls. In his hands he holds an ornate gold orb. The metal leaf background is worn thin in parts and there is a split in the oak panel one third in and down.



In the left hand corner amongst small plants and stones are the Roman numerals MDCCCLXXXVI (1886) etched in brown paint with a border.

Beneath the painting are the words ...Quod Dominus ostendit nobis ("to see the King that is come to pass, which the Lord hath showed to us")(ref c))

I Saint Luke the Evangelist is a full length seated figure within an oblong upright painted gold frame. Above his head is a golden nimbus. He faces right with his head downcast. He has dark brown hair and beard and wears a cream under garment and clutches to his chest with his left hand a red cloak edged in gold which falls to the ground covering his feet which rest on a yellow and green chequered tiled floor. Along his right arm and resting on his knee he supports upright a large green volume with a gold diamond shape on the cover and decorative studs and bound with gold clasps. Beneath him and the floor his name is written very faintly SCS LUCAS on a gilt border. The shield above his head set onto the trefoil is of a black faced ox with white horns and a ring through his nose, the attribute of St Luke, on a dark green background.



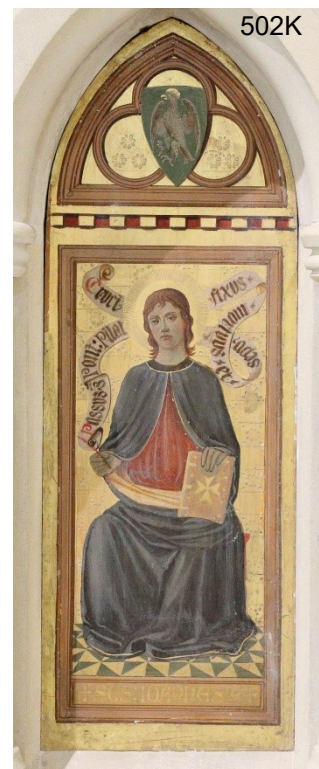
J Saint Bartholomew above is semi torso and painted within a golden circular frame and is looking down to his right. He has short brown hair and beard and is surmounted by a gold nimbus, he is dressed in a simple, red gown with a dark red cloak edged in gold over his right shoulder. In his right hand he is holding a short dagger across his chest and his left hand holds the folds of his gown. A banner across his front has the words...."sanctorum com" [*communion*] of Saints (ref b))

Saint Thomas is beneath within a gold circular frame and faces to the front. He is an elderly man with grey hair and beard. Above his head is a nimbus and he wears a dark red gown edged in gold at the neck with a green cloak draped across his chest from his right to left. He holds a long red set square in his right hand. The words on the ribbon banner are.."remissionem peccatorum" (The forgiveness of sins (ref b))

The shield set above their heads on the trefoil shows a dagger on top of a red Latin Cross on a dark green background



K Saint John the Evangelist is a full length seated figure within an oblong painted gold frame. He faces forward and has a youthful face with long curly brown hair and is clean shaven. He has an under garment of red and a blue full length cloak lined in yellow which falls to the ground covering his feet which rest on a yellow and green chequered tiled floor. In his right hand he holds a red pen and his left hand is holding a large volume with gilt decoration at the edges and a cross in the centre in the style of a Maltese cross. Beneath him and the floor his name is written faintly SCS JOHANUS on a gilt border. He has a banner to his right and left sides reading "Passus Pont(io). Pilato crucifixus mortuus et sep(ultus)" (*suffered under Pontius Pilate was crucified, dead and buried.*(ref b)) The shield above his head set onto the trefoil is of an eagle, the attribute of Saint John the Evangelist facing right with a gold crest and gilded sharp claws open on a dark green background.



L Saint Simon above is set within a gold circular frame and is looking down to his right. He has a bald pate with short brown hair at the back, he is clean shaven. Above his head is a golden nimbus. He wears a pale green robe with a red cloak around his neck and falling over his right shoulder. In his left hand he is holding a saw and on his right hand side around the edge of the banner are the words "carnis resurrectionem" (*resurrection of the body* (ref b))

Saint Matthias is beneath within a gold circular frame and faces to his right. He has short brown hair and a beard and his head is surrounded by a golden nimbus. He wears a red cowl and resting on his left shoulder leans an axe. The banner reads.."vitam aeternam" (*eternal life* (ref b))

The shield set above their heads shows a saw surmounted by an axe on a dark green background. There is some damage to this last panel, a scratch through to the gesso on St Simon from his right shoulder to his elbow, and a portion of paint missing through to the oak from the bottom of Saint Matthias' chest removing his hand and part of the circular frame and edge but otherwise all the panels are in a reasonable condition.



- 2 Oak panels coated in gesso, gilded and overpainted in oils All interwoven in paint form by a banner with the words of the Apostles Creed in Latin.
- 3 1886
- 4 9 Panels – h. 48 x w. 17cm (maximum)
3 Panels measure h. 83 x w. 48 (maximum)
- 5 -
- 6 -
- 7 -
- 8 The sisters of the Rev M Herbert Wilson
- 9 “To the Glory of God and in the memory of the Rev M Herbert Wilson Vicar of this Parish 1873 – 79, the loving offering of his sisters
- 10 a) Sussex Parish Churches - A primary source of information on churches in East and West Sussex
b) Translation from the Website of the Book of Hours using the Symbolum Apostolorum. Additional translations Anne Mills and Gill Partington
c) Luke 2 v.15

503 DRAWING Ph**Tower Vestry, S Wall**

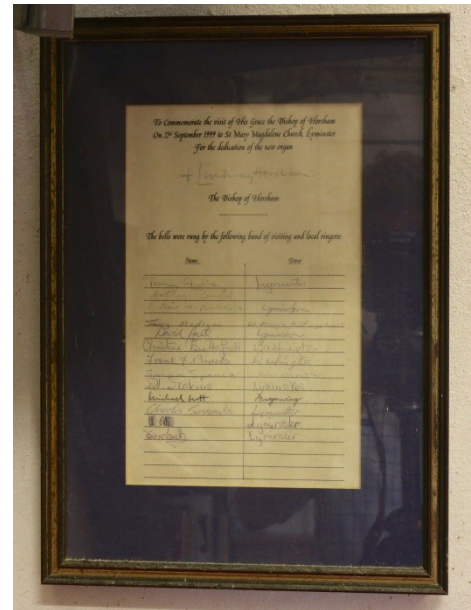
- 1 Isometric projection showing the construction of St Paul's Cathedral. Process engraving, printed on paper, framed in narrow black wood, glazed. Hand signed bottom right by Mervyn McCartney. Limited Edition No. 10/50. There is a small silver plaque attached to the bottom of the frame with an inscription in memory of Roy Benham.
- 2 Paper in Glazed Wood Frame
- 3 1928
- 4 h. 123 x w. 81 x d. 4.0cm
- 5 Brook-Greaves and Allen W. Godfrey
- 6 Published by the Architectural Press. Photo & Collo-imp. Donald Macbeth.
- 7 William Dunn, F.R.I.B.A. first suggested the idea of showing the construction of St. Paul's Cathedral by Isometric Projection. This drawing is inscribed by Mervyn Edmund McCartney, F.S.A. Surveyor to the Fabric. It was Measured and drawn by R. B. Brooke-Greaves in collaboration with W. Godfrey Allen. Valuable assistance having been rendered by Matthew Dawson F.R.I.B.A. and E. J. Bolwell. This drawing, which was commenced in October 1923 and carried out during the reparation of St. Paul's Cathedral, was completed in January 1928. The inscriptions are the work of Percy Smith. (ref a)
- 8 Ron Hylands
- 9 Given In Memory of ROY BENHAM / By Ron Hylands
- 10 a) Victoria and Albert Museum, Department of Engraving, Illustration and Design and Department of Paintings, Accessions 1929, London: Board of Education, 1930. Museum number: E.2208-1929. Gallery location: Prints & Drawings Study Room, level D, case KK, shelf 1



504 PEAL RECORDS Phs

Tower, Ringing Chamber

- 1 A framed attendance sheet to commemorate the visit of the Bishop of Horsham to the church on 22 September 1999. The Bishop signed the sheet at the top and the bell ringers each signed in with their home church name. It has a glazed wooden frame h. 36 x w. 26cm



To Commemorate the visit of His Grace the Bishop of Horsham
On the 22nd September 1999 to St Mary Magdalene Church Lyminster.
For the Dedication of the new organ.

+ Lindsay Horsham
The Bishop of Horsham

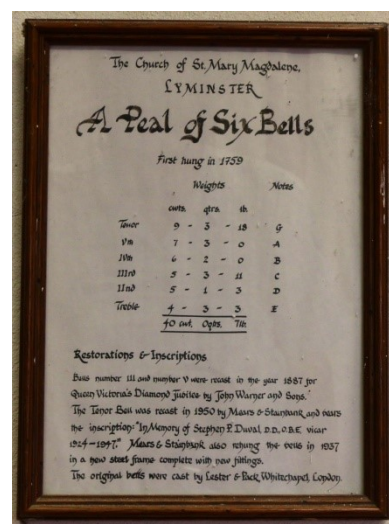
The bells were rung by the following band of visiting and local ringers.

Name	Tower
Tereza Ayling	Lyminster
Anthony Couch	
Patricia M Howlett ?/A	Lyminster
Terry Madigan	St Mary's, Billingshurst
David Hall	Lyminster
Christine Butterfield	Washington
Frank F Brooks	Washington
Susan Spencer	Chichester
Jill Dickins	Lyminster
Michael Nott	Angmering
Charles Simmonds	Lyminster
(indecipherable name)	Lyminster
James Couch	Lyminster

505 BELL AND PEAL DETAILS Ph

Tower Ringing Chamber,
S Wall

- 1 A dark brown glazed picture frame h. 31 x w. 23cm. Text black ink, hand written in Flourished Italic. For bells, see Metalwork 128.



The Church of St. Mary Magdalene
Lyminster

A Peal of Six Bells

First Hung in 1759

	Weights				Notes
Tenor	9	-	3	- 18	G
Vth	7	-	3	- 0	A
IVth	6	-	2	- 0	B
IIIrd	5	-	3	- 1	C
IIrd	5	-	1	- 3	D
Treble	4	-	3	- 3	E
				40cwt. 0qtrs. 7lb.	

Restorations & Inscriptions

"Bells number III and number V were recast in the year 1887 for Queen Victoria's Diamond Jubilee by John Warner and Sons. The Tenor Bell was recast in 1950 by Mears & Stainbank and bears the inscription: "In memory of Stephen P. Duval D.D., O.B.E., vicar 1924-1947. Mears & Stainbank also rehung the bell in 1937* in a new steel frame complete with new fittings. The original bells were cast by Lester & Pack, Whitechapel, London."

(* records show the bells were rehung in 1957 – see Metalwork 128G)

506 PEAL RECORDS Phs

Tower Ringing Chamber,
West Wall

- A Dark Brown glazed picture frame. A standard printed text with a decorative border. The text gives the details of the Peal, the date, time and place. In addition, the details of ringers and weight of the Tenor bell have been added in a lighter print font. H. 25 x w. 30cm.

ST MARY MAGDALENE'S, LYMINSTER, SUSSEX
The Sussex County Association of Change Ringers
On February 25th, 1914, a peal of 5040 Changes
of Grandsire Doubles was rung by the Local Band
in 2 hours 46 minutes, in order as follows:-

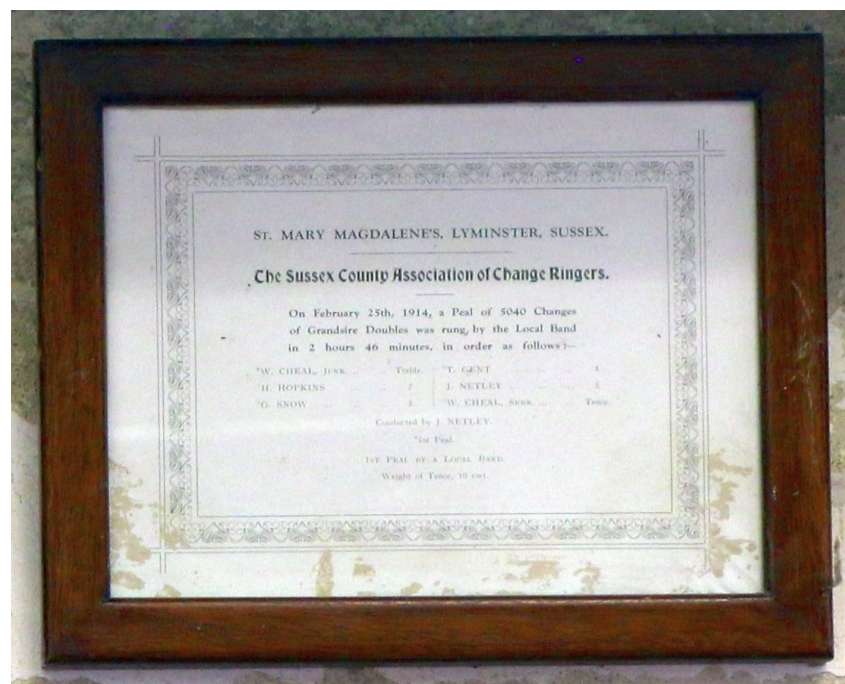
W. Cheal, Junr	Treble	*T. Gent	4
* H. Hopkins	2	J Netley	5
* G. Snow	3	* W. Cheal, Snr.	Tenor

CONDUCTED BY J NETLEY

*1ST Peal

1st PEAL BY A LOCAL BAND

Weight of Tenor 10cwt.



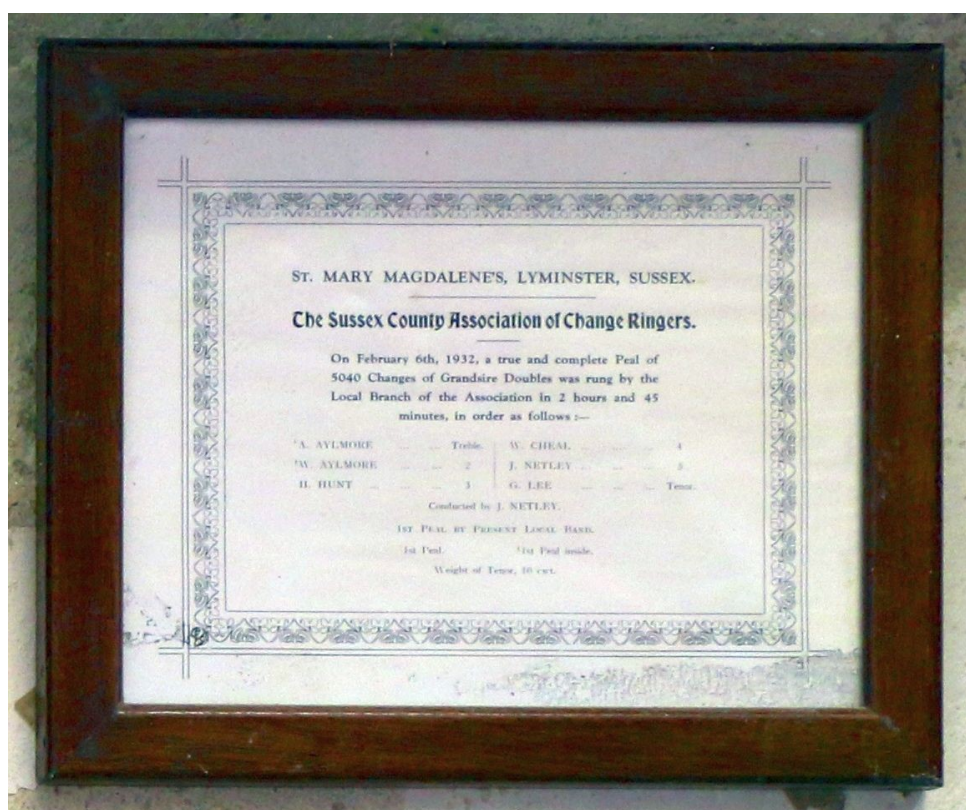
506A

- B Dark Brown glazed picture frame. A standard printed text with a decorative border. The text gives the details of the Peal, the date, time and place. In addition, the details of ringers and weight of the Tenor bell have been added in a lighter print font.

ST MARY MAGDALENE'S, LYMINSTER, SUSSEX
 The Sussex County Association of Change Ringers
 On February 6th, 1932, a peal of
 5040 Changes of Grandsire Doubles was rung by the
 local branch of the Association in 2 hours and 45
 minutes, in order as follows:-

*A. Aylmore	Treble	W Cheal	4
** W. Aylmore	2	J Netley	5
H Hunt	3	G Lee	Tenor

CONDUCTED BY J NETLEY
 1ST PEAL BY PRESENT LOCAL BAND
 * 1st Peal ** 1st Peal Inside
 Weight of Tenor 10cwt.



506B

- C Light oak glazed picture frame. A standard printed text with a decorative border. The text gives the details of the peal, the date, time and place. In addition the details of the ringers. h. 26.5 x w. 20cm

St Mary Magdalene, Lyminster

On Saturday 15th February 2011

A Quarter Peal of Plain Bob Minor
was rung in 44 minutes by the following ringers

- 1 Teresa Kendall
- 2 Susan Spencer
- 3 Hamish McNaughton
- 4 David Hall
- 5 Chris Dart
- 6 Colin Spencer

This comprised 1260 changes
and was conducted by Colin Spencer

First Quarter Peal of Bob Minor - no 1

This quarter peal was dedicated to the memory of
Jill Dickens Joint Tower Captain at Lyminster
and sadly missed by all local ringers and visitors

- D Light oak glazed picture frame. A standard printed text with a decorative border. The text gives the details of the peal, the date, time and place. In addition the details of the ringers. h. 26.5 x w. 20cm

SUSSEX COUNTY ASSOCIATION

St Mary Magdalene, Lyminster

A peal consisting of 5040 changes
of Cambridge Surprise Minor

was completed in
2 HOURS 42 MINUTES
on
SUNDAY 11TH OCTOBER 1992

Treble: RIK CLAY
2 ANN SMITH
3 JACQUELINE M. HUNTER
4 JOHN E. HAWES
5 ROY M. COX
TENOR: IAN VJ. SMITH (C)

This peal was rung to celebrate
the completion of the new ringing room
dedicated on this day.

- E Light oak glazed picture frame. A standard printed text with a decorative border. The text gives the details of the peal, the date, time and place. In addition the details of the ringers. h. 31 x w. 23.5cm

SUSSEX COUNTY ASSOCIATION

St Mary Magdalene, Lyminster

A quarter peal consisting of 1260 changes
of Grandsire Doubles

was completed in 46 Minutes

on

MONDAY 4TH MAY 2009

Treble: SILVIA HARTIGAN

2 JILL DICKINS

3 DAVID HALL

4 GEOFF LEE

5 COLIN SPENSER (C)

TENOR: TERESA KENDALL

The quarter peal was rung in memory of
Janet Hopkins who was the previous
Tower Captain at St Mary Magdalene

- F Light oak glazed picture frame. A standard printed text with a decorative border. The text gives the details of the peal, the date, time and place. In addition the details of the ringers. h. 30 x w. 23.5cm

SUSSEX COUNTY ASSOCIATION

St Mary Magdalene, Lyminster

A quarter peal consisting of 1260 changes
of Grandsire Doubles

was completed
on
SATURDAY 8TH JUNE 2002

Treble: JILL DICKENS
2 SUSAN SPENCER
3 HEATHER CHAMPION
4 DAVID HALL
5 COLIN SPENCER (C)
TENOR: ANN DAUGHTRY

This quarter peal was rung to celebrate
the golden jubilee of
Her Majesty Queen Elizabeth 2

- G Mid brown glazed picture frame. A standard printed text with a decorative border. The text gives the details of the peal, the date, time and place. In addition the details of the ringers. h. 25 x w. 19cm

SUSSEX COUNTY ASSOCIATION

St Mary Magdalene, Lyminster

A quarter peal consisting of 1260 changes
of Grandsire Doubles

was completed in 45 minutes
on
SATURDAY 18TH JANUARY 2003

Treble: MARJORIE MURPHY
2 SUSAN SPENCER
3 JILL DICKINS
4 DAVID HALL
5 COLIN SPENCER (C)
TENOR: MERVYN BREWER

- H Light oak glazed picture frame. A standard printed text with a decorative border.

The text gives the details of the peal, the date, time and place. In addition the details of the ringers. h. 26 x w. 21cm

SUSSEX COUNTY ASSOCIATION

St Mary Magdalene, Lyminster

A quarter peal consisting of 1260 changes
of Grandsire Doubles

was completed in 445 (sic) minutes

on

SATURDAY 15th FEBRUARY 2004

Treble: SYLVIA HARTIGAN*

2 MARJORIE MURPHY

3 SUSAN SPENCER

4 DAVID HALL

5 COLIN SPENCER (C)

TENOR: TERESA KENDALL

*first quarter peal in method

- I Light oak glazed picture frame. A standard printed text with a decorative border.
The text gives the details of the peal, the date, time and place. In addition the details of the ringers. h. 26 x w. 21cm

SUSSEX COUNTY ASSOCIATION

St Mary Magdalene, Lyminster

A quarter peal consisting of 1260 changes
of Plain Bob Minors

was completed in 44 minutes

on

WEDNESDAY 7TH DECEMBER 2005

Treble: JILL DICKENS *

2 SUSAN SPENCER

3 HAMISH MCNAUGHTON

4 DAVID HALL

5 KEN KNIGHT

TENOR: COLIN SPENCER (C)

* first quarter peal in method

Run to commemorate the retirement of
John Slegg as vicar to the parish

- J Dark oak glazed picture frame. A standard printed text with a decorative border.

The text gives the details of the peal, the date, time and place. In addition the details of ringers. h. 25 x w. 19cm

SUSSEX COUNTY ASSOCIATION

St Mary Magdalene, Lyminster

A quarter peal consisting of 1260 changes
of Grandsire Doubles

was completed in 45 minutes
on

SATURDAY 23rd FEBRUARY 2003

Treble: TERESA KENDALL
2 MARJORIE MURPHY
3 CHRISTINE BUTTERFIELD
4 DAVID HALL
5 COLIN SPENCER (C)
TENOR: MERVYN BREWER



506C-J

- K A light brown glazed picture frame. Housing a standard printed text with a photograph of Jill Dickins inserted against a yellow background. The text gives the details of the peal that was rung, those taking part, the date, time and place. H. 17 x w.23cm.



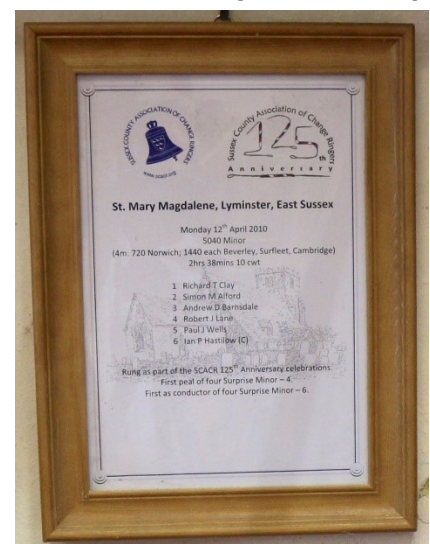
Elderflower Cordial

Rung on the 11th January 2011 at the funeral of:
Jill Dickins
(Tower Captain 1999 - 2010)

Treble: Teresa Kendall (cond)
2. Judy Yelling
3. Sylvia Hartigan
4. Derek Hulmes
5. Robert Wilson
6. David Hall (Tower Capt.)

The bells rang out in full peal at Jill's request to celebrate her life.

- L A Light oak glazed picture frame. Housing a standard printed text with two decorative logos for the Sussex County Association of Change Ringers and their 125th Anniversary. The text gives the details of the peal that was rung, those taking part, the date, time and place. H. 36 x w. 27cm



Monday 12th April 2010

5040 Minor

(4m:720 Norwich; 1440 each Beverley, Surfleet, Cambridge)

2hrs 38 mins 10cwt

- 1 Richard T Clay
- 2 Simon M Alford
- 3 Andrew D Barnsdale
- 4 Robert J Lane
- 5 Paul J Wells
- 6 Ian P Hastilow (C)

Rung as part of the SCACR 125th Anniversary celebrations

First Peal of four Surprise Minor - 4

First as conductor of four Surprise Minor - 6

M A light brown mottled glazed picture frame. Housing a printed text with two decorative logos. One being the representation of a bell mechanism which is superimposed on the other which is a representation of the Sussex coat of arms. The text gives the details of the peal that was rung, those taking part, the date, time and place. In addition the details of ringers. H. 31 x w. 26cm.



St Mary's Church, Lyminster

Quarter peal of Bob Minor rung on
2nd January 2016

Treble	Hamish McNaughton
No 2	Jane Deadman
No 3	Susan Spencer
No 4	David Hall
No 5	Colin Spencer (C)
Tenor	Nick Deadman

The quarter peel was rung in memory of
Kylee Bell (aged 36) who died suddenly
at home just before Christmas 2015

Kylee and her / Daughter Torin / (aged 9) had been / Learning to ring / With the
Lyminster / Band and will both / Be sadly missed.

- N A light brown glazed picture frame. Housing a printed text illustrated in the form of a scroll. The text gives the details of the peal that was rung, those taking part, the date, time and place. H. 33 x w. 28cm



St Mary Magdalene
Lyminster
West Sussex

Celebration of
Queen Elizabeth and
The Duke of Edinburgh's
Golden Wedding Anniversary
On the 22nd November 1997

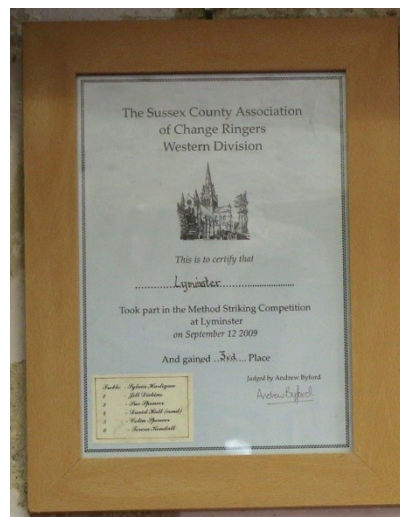
"Lyminster Surprise"

Treble: Mrs Sylvia Hartigan
2 Mrs Janet Hopkins
3 M/s Jill Dickens
4 Mr Anthony Holland
5 Miss Tereza Ayling
Tenor Mr Alex Wolsford

507 CERTIFICATE Ph

Ringing Chamber, West Wall

- 1 Wide light brown glazed picture frame containing a certificate issued by the Sussex County Association of Change Ringers confirming Lyminster's 3rd place in the Method Striking Competition of 12 September 2009. A standard printed text with hand written details of the completion, the date, time and place. There is a hand written label giving details of participants stuck to the lower left hand side of the certificate. H. 38 x w.28cm.



The Sussex County Association
Of Change Ringers
Western Division

This is to Certify that
Lyminster

Took part in the Method Striking Competition
At Lyminster
On September 12 2009
And gained 3rd place

Treble: Sylvia Hartigan
2 Jill Dickins
3 Sue Spencer
4 David Hall (cond)
5 Colin Spencer
6 Teresa Kendall

Judged by Andrew Byford

508 CERTIFICATE Ph

Tower Ringing Chamber,
West Wall

- 1 Dark brown with gilded edge glazed picture frame. A standard printed text with a decorative border and in the centre an emblem of a bell. The text gives the details of the competition, the date, time and place. In addition the details of ringers. H. 37.5 x w. 31cm

2 THE SUSSEX COUNTY ASSOCIATION OF CHANGE RINGERS
WESTERN DIVISION CALL CHANGE COMPETITION

For the
HARRY BUTLER MEMORIAL CUP

Held at
St John the Baptist, Findon
On

Saturday 10th March 2001
THIRD PLACE

Awarded to
LYMINSTER
Judged by C. J. Shepard

Sylvia Hartigan (conductor) Pat Howlett Jill Dickens
Thereza Ayling David Hall Mervyn Brewer (tenor)



509 CHARITY CERTIFICATE Ph

Tower Ringing Chamber,
West Wall

- 1 Mid brown glazed picture frame holding to the right hand side a standard printed text from the Children in Need Charity thanking Lyminster Church Bellringers for their donation of £305.00 in 2000. Includes the Pudsey symbol. To the left hand side is a photograph of the ringers with the names listed under it. h. 37.5 x w. 27.5cm.

Mervyn Brewer
Jill Dickens

Sylvia Hartigan
Pat Howlett

David Hall
Tereza Ayling

2



510 PAINTING Ph

Tower Ringing Chamber,
East Wall

- 1 A commercial copy of a painting showing the hand grip that is attached to a bell rope, normally referred to as the "Sally". Also shows a mouse peering around the Sally.
- 2 Wood and Glass
- 3 -
- 4 h. 37 x w. 18cm
- 5-10 -

511 PICTURE Ph

Tower Ringing Chamber,
East Wall

- 1 A woven dragon logo for the St Mary Magdalene Bell ringers, with a written description shown below.
ST MARY MAGDALENE, LYMINSTER BELLRINGERS
The logo represents the local legend / of the Lyminster dragon. / This was believed to live in the "Knucker Hole", / a deep fresh water fed lake located just north / of the church. The design helps to / keep alive one of the few Sussex dragon myths
- 2 Material, Wood, and Glass
- 3 -
- 4 H. 32 x w. 26cm
- 5-10 -



510



511

512 PHOTOGRAPHS PhS

Tower Ringing Chamber

The first photograph 512a is hanging on the south wall of the tower ringing chamber, the remaining photographs 512b-512k are hanging on the east wall of the ringing chamber.

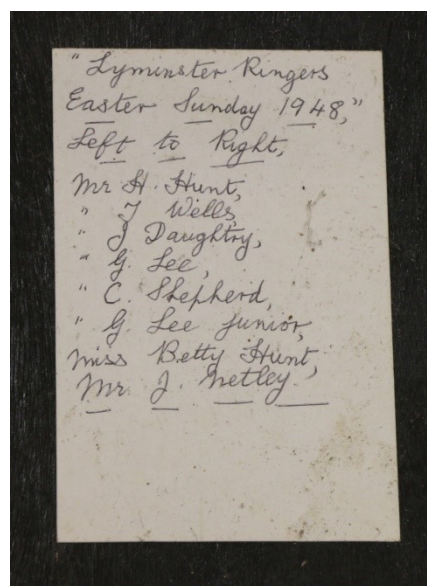
- A Two photographs mounted in the same brown and gold frame. Both show a group of ringers. H. 36 x w. 26cm
The top photograph has the caption:
"Visit of the Bishop of Horsham on 22nd September 1999"
/ Terry Maddigan Jill Dickins (Tower Captain) Bishop
Lindsay David Hall / Charles Simmonds Rosie
Cambourn James Couch Pat Howlett
The lower photograph has the caption:
Millennium Ringers at mid-day on 1st January 2000 /
David Hall Jill Dickins (Tower Captain) / Thereza Ayling
Judy Simmonds Sylvia Hartigan Anthony Holland.



- B Photograph mounted in dark brown frame showing a group of eight bell ringers, seven gentlemen and one lady, standing in the ringing position. Details of the people shown in the photograph are written on the rear of the frame. H. 40 x w. 32cm.
Lyminster ringers
Easter Sunday 1948,
Left to Right, / Mr H Hunt / Mr T Wells / Mr J Daughtry / Mr G Lee / Mr C Shepherd /
Mr G Lee junior / Miss Betty Hunt / Mr J Netley.



512B

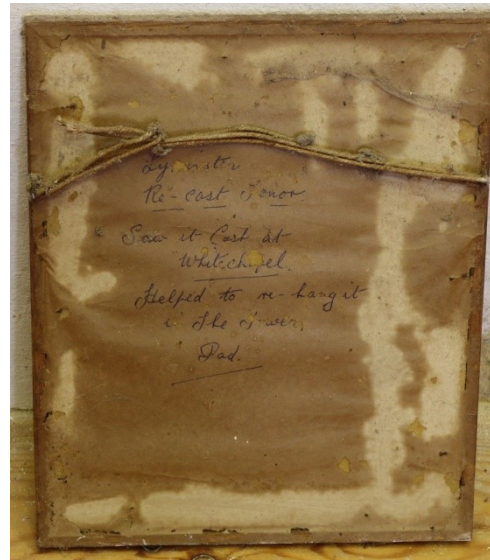


512B reverse

- C Photograph of a bell that had been recast and is waiting to be re-hung. (See Metalwork 128G) The manufacturers details are around the top though not all details are visible. The bell bears the following details and inscription.
Recast 1950 in memory of Stephen P. Duval D.D. O.B.E. / Vicar 1924-1947.
On the reverse of the frame which is damaged with the paper cover peeling in places is hand written "Lyminster / re-cast-tenor / Saw it cast at / Whitechapel / Helped to re-hang it / in the Tower / Dad
h. 27 x w. 22cm.



512C



512C reverse

- D Photograph in a light brown ribbed frame. It shows a group of five ringers. h. 28 x w. 23cm. The occasion and names of the ringers has been hand written above the photograph as follows:

TO CELEBRATE THE BIRTH OF
PRINCE GEORGE OF CAMBRIDGE
ST MARYS LYMINSTER BELLS
RANG
ST. GEORGE AND THE DRAGON
ON THE 28TH JULY 2013
TREBLE: SYLVIA HARTIGAN
3RD JUDY YELLING
4TH TERESA KENDALL
5TH ROBERT WILSON
TENOR: DAVID HALL (Tower Capt.)



- E Photograph of a group of Hand Bell Ringers, mounted in a black frame with silver edging. Names of those shown are below the photograph.
Walter Cheal Snr. Walter Cheal Jnr. George Snow Jack Netley
Henry Hopkins William Matthews
Thomas Wells George Carpenter
h. 20 x w.24cm
- F Photograph in a light brown frame with a blue mount was taken on the 11 October (year not known). It shows a group of ringers, the occasion and names of the ringers are shown below the photograph on a typed slip of paper as follows:
Arundel W. Sussex. 11 Oct 1260 Grandsire Triples / Betty C. Haselgrove 1, G.H. Lee 2, Anne / Daughtry (150th Q) 3, Susan M. Spencer 4, E. / Treagus 5, M. J. Wake 6, G.R. Spencer (C) 7, R. P. / Wood 8. To celebrate 60 years ringing by J. B. / Daughtry. H. 19 x w. 25cm.
- G Photograph in a dark brown frame with gilt edging. It shows a group of ringers as viewed from above. There are no details of the people shown. H. 31 x w. 33cm.
- H Photograph in a light brown frame with gilt edging. It shows a group of three ringers standing in front of a Christmas tree. The names of the ringers have been typed below the photograph as follows:
Arundel Castle ringing - December 2011. / Teresa Kendall, David Hall / and Sylvia Hartigan in the Barons Hall.
h. 31 x w. 33cm



512E



512F



512G



512H

- I Photograph in a black frame with gilt edging. It shows a group of ringers, the names of the ringers have been typed below the photograph as follows:
 Lyminster bellringers circa 1955
 Mercy Hunt - Tom Wells - Unknown -
 Charlie Shepherd - Geoff Lee - Unknown -
 Treavor Neave - Geoff Lee Snr.
 h. 30 x w. 30cm



- J Photograph in a dark brown frame with a yellow mount was taken in 1997. It shows a group of ringers, the names of the ringers are shown above the photograph on a handwritten slip of paper as follows:

1997

Alex Wolsford, Jill Dickens, Anthony Holland /
 Tereza Ayling, Janet Hopkins, Sylvia Hartigan/
 (Tower Captain)

h. 14 x w. 20cm



- K Photograph in a pale brown frame with a typed slip at the bottom stating:

A portrait of Jill Dickens, Lyminster Tower Captain 1998 - 2010.

h. 19 x w. 14cm



513 PAINTING Ph

h

North Aisle

- 1 Original watercolour map of the parish of Lyminster. Around the perimeter of the picture are miniature paintings of local interesting landmarks, from farms, convents, St Mary Magdalene Parish Church, Streams and Hamlets, all being within the parish boundaries. Each miniature has written, adjacent to it, a note giving relevant facts e.g. indicating a moment in its long history. The central portion indicates the roads

and railway lines, again with relevant notation. The top centre of the painting is a depiction of Arundel Castle, whilst the bottom centre depicts the legend of the Knucker Hole. A narrow blue painted border around the edge shows many different spellings of Lyminster from Saxon times to the present day. Between each miniature painting are cameos of flowers and birds found locally and painted by the artists named in (5) below

- 2 Original watercolour on paper, framed in 2" reverse ogee gilt, glazed and hung on chains.
- 3 2000
- 4 h. 70 x w. 95 x d. 2cm
- 5 Parish map designed and drawn by Alan Burnett, a local Architect, with contributions from local artists. Birds: John White. Wild flowers: A Blackmore, Verity and Liam Bligh. Buildings: Alan Burnett, Identifying the history over 1000 years.
- 6 -
- 7 To celebrate the Millennium local committees were formed to create a map of each Parish in West Sussex which was then included in A book titled 'A Sense of Place, West Sussex Parish Maps'. (ref a)
- 8 Alan Burnett 2000
- 9 -
- 10 a) A Sense of Place - Published by West Sussex County Council, County Hall, Chichester. Produced for the millennium and available in local libraries.



513

514 PAINTING Ph

North Aisle

- 1 Original watercolour painting of the parish of Warningcamp, framed in ogre reverse wood, glazed and hung on chains. A companion to the Lyminster Map (513). Drawn and painted by local artists and their families; they have gathered together depictions of their favourite views of this small hamlet. There are cameos of cottages, animals, butterflies and birds and each is notated in great detail in delicate calligraphy. Each cottage and farm is included and named with its own story.
- 2 Paper, wood.
- 3 1999
- 4 h. 85 x w.116 x d.2cm
- 5 Map Design: Lou Oakes geographer. Artists and Calligraphers: Chris Austen, Mary Barber, Becky Barber, Brian Bull, Alan Chapman, Tim Groves, Alison Groves, Pippa Groves, Simon Groves, Audrey Hall, Jack Holden, Harry Holden, Rosalind Holden, Sally-Jane Howard, Lou Oakes, Matthew Taylor-Roberts, Claudia Taylor-Roberts, Chris Warren, Paul Winner.
- 6 -
- 7 To celebrate the Millennium local committees were formed to create a map of each Parish in West Sussex, which was then included in a book titled 'A Sense of Place, West Sussex Parish Maps'. This map hung at Warningcamp Youth Hostel until it closed in 2012.
- 8-9 -
- 10 a) A Sense of Place - Published by West Sussex County Council, County Hall, Chichester. Produced for the millennium and available in local libraries.



514

515 PAINTING Ph

North Aisle

- 1 An original watercolour in a glazed, oak, Oxford frame. The frame has a routed line along the 4 sides and roundels at each corner. The watercolour is divided into 3 sections with lettering. The top section has a grey depiction of Arundel Castle with trees in the foreground. The skyline is painted orange with the words 'Welcome to our Saxon Church' in script, the W is illuminated in red. To the left of the castle, along the tree line is a tower. Below the castle is written in script 'please look around / or say a prayer / as people have done since the year 1040'. The next scene is a river scene with 3 yachts moored on the left-hand side



coloured grey, white and blue. There are white mooring buoys in front of the yachts. The scene above the boats is of downland hills. The opposite bank of the river which bends round to the left there is a yacht sailing upstream. The right-hand bank has 3 posts along the edge. Next to this scene on the right is a depiction of the Knucker hole and the dragon. The wording in script, beneath is 'If you feel able to help with the maintenance please leave a donation in the box below'. The 3rd scene is St Mary Magdalene Church with St Georges flag flying above the tower. Large clouds in the sky. The windows of the church are detailed and there are dark roof tiles. The path leads up to the church through the graveyard from the lych gate which is in a flint wall, outside is a grass verge. Four trees and shrubs are on the left in the graveyard with two more in the centre and one on the right-hand side. Further trees and shrubs can be seen in the distance

515

- 2 Watercolour on paper
 3 1995
 4 h. 99 x w. 75 x d. 5cm
 5 Alan Burnett
 6-7 -
 8 Alan Burnett
 9-10 -

516 FRAMED NOTICE/SCROLL Ph

North Aisle

- 1 Handwritten list, in flourished italic, giving details of the structural works and improvements, undertaken at St Mary Magdalene Lyminster Parish Church during the period 1880 – 1896. It has been written in black ink with capitals highlighted in red and gold ink. Then framed in narrow gilt and glazed. Also contained in the frame is a newspaper cutting from the West Sussex Gazette with a date of 3 Jan 1884 handwritten on the bottom. There is evidence of severe damage that has been caused by the ingress of water, mostly at the bottom of the scroll,. This has made the lower 20 cm illegible. The wording on the scroll is as follows:-

**Lyminster Parish Church Improvements
1880 to 1896**

PULPIT READING DESK & LECTERN

In May 1880 a Faculty was obtained empowering Mr Carleton Holmes to remove the Pulpit Reading Desk and two pews behind the same and instead thereof to erect a New Pulpit and Reading Desk with a view of erecting a Memorial Pulpit and Prayer Desk to the late vicar The Reverend M Herbert Wilson. The Pulpit and Prayer Desk were provided by a subscription from 132 of the Parishioners at a cost of £68. The Lectern was afterwards given by Madame H Buhot as a memorial to her Father Henry Johnston.

CHANCEL & AISLE

In March 1883 a Faculty was granted to the Vicar and Churchwarden to restore the Chancel and lengthen the North Aisle as proposed by Mr Gordon Hills comprising the following works viz- The reconstruction of the Roof to a higher pitch, the closing of the door on the north side and the Easternmost window on the South side of the Chancel with the opening of an old window on that side, the erection of Choir and Clergy seats and the rearrangement of the Altar rails and steps also the continuation of the North Aisle for the purpose of an Organ Chamber and Vestry through the Ancient Arch and connecting it with the Chancel by two Arches.

These works were duly executed at a cost (including £60 for the heating apparatus) of about £700 towards which Eton College subscribed £200 Madam Buhot £150 and Thomas Evans Esq JP £100.

Annexed is an account of the Reopening of the Chancel from the West Sussex Gazette of 3rd January 1884.

GRAVE YARD WALL

In the same year the Eastern High Wall which screened the view of the Grave yard and lower part of the Chancel and Church was reconstructed at a lower height, from contributions from the Parishioners of Lyminster and Warningcamp (the latter being liable for the repair of that part of it North of the Principal Gate at a cost of about £20.

ORGAN

In 1884 The Organ (the original cost of which was £700) was purchased through the medium of Revd E Durnford the Vicar for £180 by a subscription from the Parishioners.

HEATING APPARATUS

In the same year an improved Heating apparatus with a self supplying water system was provided and a new Boiler fixed at the cost of about £70 which was repaired and further improved in the year 1886 at a cost of £38.15.0, both amounts paid by voluntary subscriptions.

REREDOS COMMUNION PLATE & BRASS

The Reredos was erected by the Brother and Sisters of the late Revd Herbert Wilson in his Memory. The carving of the lower part of the Stone work was done at the cost of the Widow of the late Revd Edward Durnford in whose memory also the Parishioners provided the New Communion Plate and erected a Brass in the Chancel at the cost of £42.

BELLS & TOWER

In the Jubilee Year 1887 a Jubilee Fund of £193 was raised by Parishioners and expended in replacing the 3rd and 5th Bells by new ones, strengthening the old Frame and rehanging the old Bells- quarter turned by J Warner and sons, Cripplegate, London. Also in refitting the Bell Tower with new floor, putting the Ringing Chamber in repair and adapting it for a Vestry.

OLD ORGAN CHAMBER & FONT

In 1892 under the direction of Mr George Truefitt (the Architect of the Restoration of the church 1864) The Tomb of Richard Wyatt Esq of Court Wick under the site of the old Altar at the Eastern End of the Northern Aisle (used as an Organ Chamber since the Restoration 1864) was lowered to its original level (that of the Chancel) and made convenient for Baptismal services the old Arch between the Choir Vestry and the North Aisle being closed with an oak and lead glass Screen and the Font removed in front of it from its old site (on the Eastern side of the entrance door to the Church, the cost of £100 was subscribed by Hugh P Wyatt Esq: another representative of the Parishioners.

GRAVE YARD

In 1893 The Grave Yard was enlarged on the Western side by the Gift of the Site by His Grace the Duke Of Norfolk and at a cost of the Parishioners for fencing etc of about £80. In the same Year the Lych Gate was erected by a Parishioner as a Thank offering.

STAINED GLASS WINDOWS

In the year 1894 A Memorial Window to the late Jeremiah ?? Family was ?? for the plain lancet one next to the Pulpit and stained Glass to the other two windows on the south side of the nave have since been substituted by Members of the same family.

REGISTERS

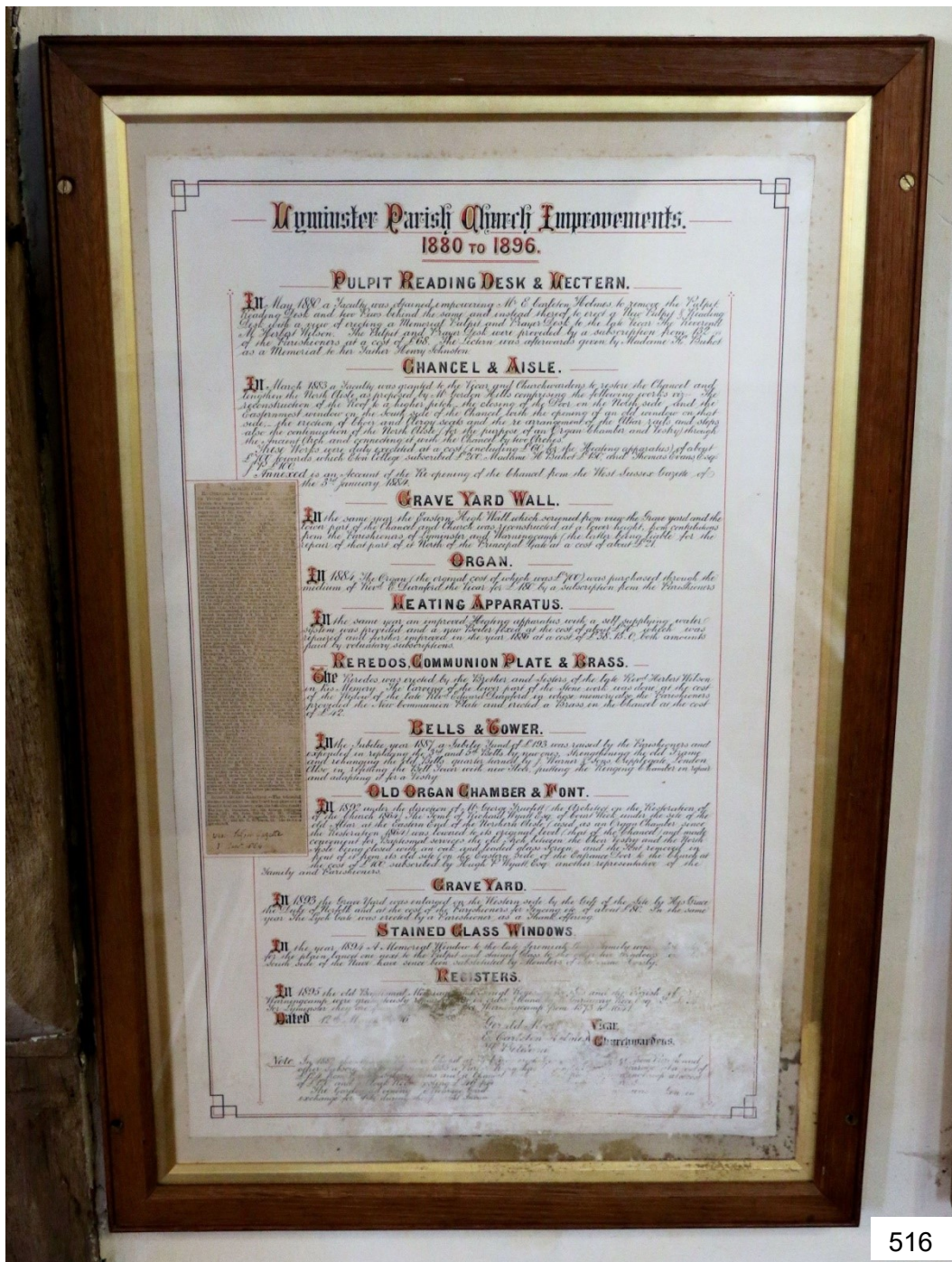
(Much is illegible) In 1895 the old Baptismal. Marriage ??? Register for this and the Parish of Warningcamp were grat---ously ??? in order & bound by R Garruway Rice Esquire ?? For Lyminster they are ??????? They are from 1566 to 1790?.....? Warningcamp from 1573 to 1641

Dated 12th March 1896. Gerald M..... Vicar
 E. Carlton Holmes.) Churchwardens
 H.Bildam.)

Note. In 1882 the Mission Room or Chapel at Wick??? from Parish and Other subscriptions ?? and since 1885 a Parish ?? has ???? at a cost of £124 from Parish subscriptions and a Chancel.....??? Warningcamp at a cost Of £120 and a Cloak Room costing £46 from ???

The Garden adjoining the Vicarage Garden ???
exchange for ?? during the present Incumbent ???

- 2 Parchment
3 12th March 1896
4 h. 71 x w. 46 x d. 3cm
5-10 -



517 SCROLL Ph

North Aisle

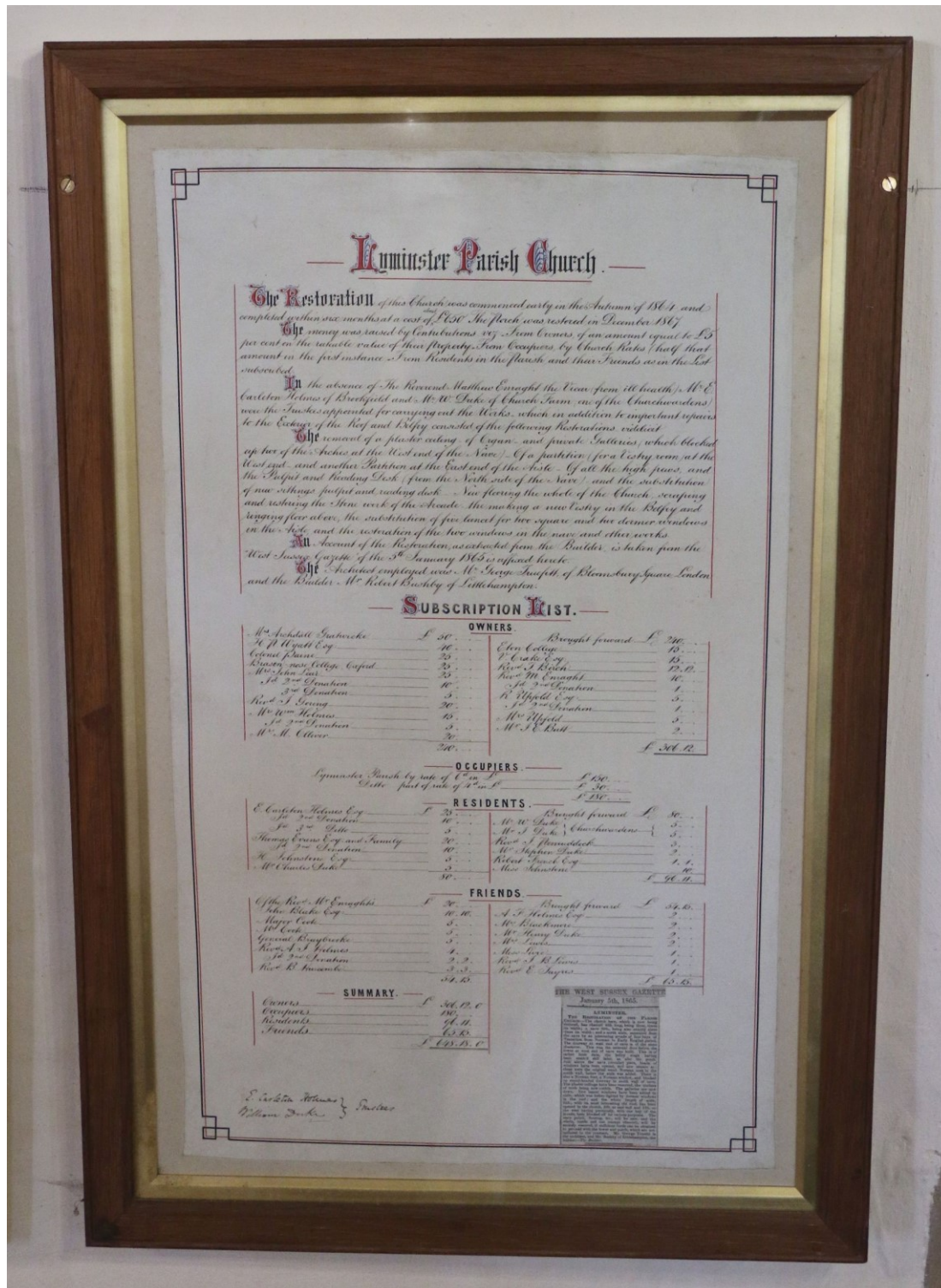
- 1 This scroll was handwritten in black ink on parchment in flourished Italic script with capitals highlighted in red ink. A decorative black and red border has been added around the edge of the script. It is mounted in a with dark brown wooden frame with narrow gilt internal edging and glazed. It gives a summary of the restoration work, to the church of St Mary Magdalene, Lyminster, that was undertaken during the period 1864 and 1867. More importantly it gives a comprehensive list of the Benefactors, The actual List of Benefactors is divided into groups as follows:-
Owners of which there are 20, collectively contributed the sum of £306.12s
Occupiers of which there were two, contributed the sum of £180.
Residents of which there were 13, contributed the sum of £96.11s
Friends of which there were 15, contributed the sum of £65.15s.
 This gave a grand total of £648.18s.0p.
 The document is signed by the two trustees.
 Also inserted in the frame is a cutting from The West Sussex Gazette dated the 5th January 1865 giving an explanation of the restoration and benefactors.

2 Parchment, wood, glass.

3 1865

4 h. 71 x w. 47 x d. 3cm

5-10 -



518 LIST OF INCUMBENTS Ph

North Aisle

- 1 Lyminster St Mary Magdalene List of Incumbents from 1253 to 2011. The text is in black ink with dates in red ink in flourished Italic on parchment. It is framed in narrow limed oak and glazed. H. 56 x w. 39.
- 2-10 -

Lyminster, S.Mary Magdalen

V ♦ I ♦ C ♦ A ♦ R ♦ S

PATRON: 1348 Prioress and Convent of Lyminster
 1605 Henry Savill, Knt. 1632 Eton College
 1876 Brasenose College, Oxford

1253	John de Widihaya	1605	Thomas Hearne. B.A [deacon]	1833	Mark Henry Vernon, M.A.
1287	Walter	1632	John Scull	1836	Edward Hamer Ravenhill
1348	John Kemp	1634	George Edglee	1852	Charles Rous Dury, M.A.
1349	John Okman	1664	John Maynard	1856	Matthew Enraght, M.A.
1358-9	John Fogkeler	1666	William Howell	1873	Matthew Herbert Wilson,
1359	Robert de Weston	1669	Henry Swelling	1880	Edward Durnford, M.A.
1387-8	John Goolde	1672	John Harris	1885	Gerald Henry Moor, M.A.
1395	William Burgeys	1680-1	Josias Pleydell	1902	Percy Thomas Andrews, M.A.
1395	Eustachius Brown	1683-4	Francis Wright	1919	Henry Charleton Baker, B.A.
1409-10	John Robroke	1688	Conyers Richardson, A.M.	1923	Oscar Sydney Laurie, M.A.
1419	William Sehem	1696	John Jannard, A.M.	1924	Stephen Peachy Duval, D.D.
1419	Gaucelinus Turnour	1701	Philip Thorne	1947	David Duval, M.A.
1422	Walter Jakelyng	1715-16	Henry Hughes, A.M.	1949	Herbert William Newell, M.A B.D.
1438-9	John Dull	1720	Bell Carleton, A.M.	1965	Douglas Satterford DSC
1438-9	Christopher Sclar	1741-2	Daniel Gittins, LL.B.	1986	John Edward Slegg M.A. P.in C.
1500	John Wyllyngham	1761	John Buckner, B.A.	2006	David Alan Burt B.Th.P.in C.
1500	Walter Saunders	1772	Robert Sandham, M.A.	2011	John Christopher Quigley S.T.L.
1505	William Rogers	1776	Charles Baker, M.A.		
1517	Richard Burges	1785	Robert John Sayer		
1534-5	Mathew Ryle	1830	William Groome, M.A.		
1546-7	Arnold Goldworthye	1814	Charles McCarthy		
1555	William Burges	1823	George Palmer, M.A.		
1566	Anthony Hobson	1825	Edmond Cartwright, M.A.		

Lyminster, S. Mary Magdalen

V·I·C·A·R·S

PATRON: 1348 Prioress and Convent of Lyminster
 1605 Henry Savill, Knt. 1632 Eton College
 1876 Brasenose College, Oxford

1253 John de Widihaya	1605 Thomas Hearne, B.A. [deacon]	1855 Mark Henry Vernon, M.A.
1287 Walter	1632 John Scull	1856 Edward Hamer Ravenhill
1348 John Kemp	1634 George Edglee	1852 Charles Rous Drury, M.A.
1349 John Okman	1664 John Maynard	1856 Matthew Enraght, M.A.
1358-9 John Fogkeler	1666 William Howell	1873 Matthew Herbert Wilson, M.A.
1359 Robert de Weston	1669 Henry Swelling	1880 Edward Durnford, M.A.
1387-8 John Goolde	1672 John Harris	1885 Gerald Henry Moor, M.A.
1393 William Burgeys	1680-1 Josias Pleydell	1902 Percy Thomas Andrews, M.A.
1395 Eustachius Broun	1683-4 Francis Wright	1919 Henry Charleton Baker, B.A.
1409-10 John Robroke	1688 Conyers Richardson, A.M.	1923 Oscar Sydney Laurie, M.A.
1419 William Sehem	1696 John Jannard, A.M.	1924 Stephen Peachey Duval, DD
1419 Gaucelinus Turnour	1701 Philip Thorne, A.M.	1947 David Duval, M.A.
1422 Walter Jakelyng	1715-16 Henry Hughes, A.M.	1949 Herbert William Newell, M.A. B.D.
1438-9 John Dull	1720 Bell Carleton, A.M.	1965 Douglas Satterford D.S.C.
1438-9 Christopher Scolar	1741-2 Daniel Gittins, LL.B.	1986 John Edward Slegg, M.A. P.in.C.
1500 John Wyllyngham	1761 John Buckner, B.A.	2006 David Alan Burl, B.Th. P.in.C.
1500 Walter Saunders	1772 Robert Sandham, M.A.	2011 John Christopher Quigley S.T.L.
1505 William Rogers	1776 Charles Baker, M.A.	
1517 Richard Burges	1785 Robert John Sayer	
1534-5 Matthew Ryle	1830 William Groome, LL.B.	
1546-7 Arnold Goldworthye	1814 Charles McCarthy	
1555 William Burges	1823 George Palmer, M.A.	
1566 Anthony Hobson	1825 Edmond Cartwright, M.A.	