

St Mary Magdalene
Lyminster
West Sussex

1 METALWORK

The condition of items in this Section appears to be satisfactory unless otherwise stated. All hallmarks in the text are enlarged unless otherwise stated.

100 PATEN Ph

- 1 A White Metal paten with engraved ornamental Bottonée cross (100A) in a stippled circle on the rim, surrounded by a circular border which has a series of small indented circles around the border. Condition good, some minor dents in the rim. Hallmark (100B) on underside, maker JE (in Latin script in a horizontal double O), leopard head, lion passant, date letter L (Latin script, in a shield), queen's head (young Victoria facing left).
- 2 Sterling Silver
- 3 1886/1887 date letter L London (refs a), b), c).
- 4 Weight 164g, diam. 18.1cm (ref c).
- 5 Jesse Earls
- 6 JE for Jesse Earls, a smallworker (ref b).
- 7 The mark was registered by Jesse Earls a smallworker on 22 October 1878 (ref d).
- 8-9 -
- 10 a) Jacksons Hallmarks page 36
b) The Librarian Goldsmiths Co London, quoting John Culme's book: The directory of gold and silver smiths, jewellers and allied traders 1838-1914 (Woodbridge, ACC, 1987, two vols) which is based on the records of London Assay Office
c) An Inventory of Church Plate in the Deanery of Arundel 1902 by J.E. Couchman, Chichester Public Library
d) *ibid.*, vol 2, p.175



100



100A



100B Hallmark

101A PAIR OF CHALICES

Ph

- 1 Pair of chalices used at the Altar. Part of a set including 101B and 101C. Hemispherical bowl, sterling silver parcel gilt. Plain hexagonal stem with a knot with six vertical lines. A hexagonal collet joins to a high circular foot with hexagonal markings, stepped up at the base. Full hallmarks under the foot of both chalices (Ph 101A Hallmark) - maker AEJ in Latin script, anchor, lion passant, date letter u in italic script (ref a). One chalice has an Alisée patée cross (Consecration) finely etched on the foot. (ref c). They are identical apart from this mark.
- 2 Sterling silver and gilt
- 3 1994 Birmingham u (ref a).
- 4 Weights: 569 grams (engraved) and 570 grams (plain)
Measurements: both
h 21.2 cm, diam bowl 11.9 cm
diam of foot 12.5cm (engraved chalice); 12.6 cm (plain chalice)
- 5 -
- 6 AEJ A. Edward Jones Birmingham
- 7 These items were purchased in 1994 to replace silver which was stolen (ref b & d).
- 8 -
- 9 -
- 10 a) Jacksons Hallmarks page 87
b) Oral, Shirley Pope
c) Inside churches-A Guide to Church furnishings. Capability Publishing NADFAS 1993 Pages 50
d) Terrier page 16 Schedule of Church Plate Sept 1994.



101A



101A-C Hallmark

101B FLAGON Ph

- 1 A pear shaped Flagon,(ref a) sterling silver. Inside flagon is parcel gilt. The lid has a finial of an Alisée patée cross (ref b). The hinge is flat with no thumbpiece. A simple scroll handle. 4 hallmarks by the handle on the body of the jug, Full hallmarks (same as 101A, page 5): maker AEJ in Latin script (anchor, lion passant, date letter u in italic script). A plain, triangular section lip. The lower mount is annulated with 2 roll mouldings. Joined to a circular foot stepped at the base (ref a). Part of a set with 101A and 101C.
- 2 Sterling silver and gilt.
- 3 1994 Birmingham u (ref c)
- 4 Weight 788 grams
Measurements h of handle 10cm; h overall 26 cm
Diameter of widest part 34 cm est.
- 5 -
- 6 AEJ, for A. Edward Jones, Birmingham
- 7 This Item was purchased in 1994 to replace silver which was stolen (refs d & e)
- 8 -
- 9 -
- 10 a) Inside churches-A Guide to Church furnishings. Capability Publishing NADFAS 1993 page 140
b) Inside churches page 50
c) Jacksons Hallmarks page 87
d) Oral, sacristan, Shirley Pope
e) Terrier page 16 Schedule of Church Plate, Sept 1994.



101B

101C TWO PATENS Ph

- 1 Two patens which are a matched pair. They both have a finely engraved aliséé cross on rim. Hallmarks under rim of plate, Full hallmarks (same as 101A, page 5): maker AEJ in Latin script (anchor, lion passant, date letter u in italic script). Part of a set with 101A and 101B..
- 2 Sterling silver
- 3 1994 Birmingham u (ref a & c)
- 4 Weight 233.5 grams
diam. 18.6cm
- 5 -
- 6 A E J, A Edward Jones, Birmingham
- 7 The items are part of a set purchased to replace items which were stolen. (refs b,c)
- 8 -
- 9 -
- 10 a) Jackson Hallmarks page 87
b) Oral, Sacristan Shirley Pope
c) Terrier page 16 Schedule of Church Plate Sept 1994



101C

102 BAPTISMAL SHELL Ph

- 1 A vessel with a shallow bowl made of mother of pearl having a silver fleurée (ref a) cross as a handle. The handle stands at right angles to a small, silver plate with a fluted end, which is attached to the shell by rivets . The rubbed hallmark (Ph 102B) is on the underside of the handle, quatrefoil with the letters JW & Co Lo, a lion passant. Leopards head and date letter 'm' in roman script. Below the hallmark is a mark of 3 leaves which is unidentified. It was used for pouring Baptismal water. Its condition is 'Fragile' with hairline cracks.
- 2 Mother of pearl and sterling silver.
- 3 Hallmarked: Although the mark is rubbed there are enough features to identify it as London 1907/08 (refs b, c).
- 4 Overall Height of shell plus handle = 14cm; Height of cross on handle= 3.2cm; Width of handle = 3.5cm, overall height of handle = 6.6cm including finial. Height of mother of pearl shell/bowl = 11cm; Width = 10.5cm.
- 5 -
- 6 J. Wipple and Co Ltd of 11 Tufton Street, Westminster SW1
- 7 Because of its condition the shell is no longer used. It is stored in the original leather presentation case which has a blue satin lining. Replaced by Item 104 (ref d).
- 8 -
- 9 -
- 10 a) Inside Churches 1993 ed. P50 and P111
 b) "Silver Makers Marks" website Church Recorders Resources, Referenced as The Librarian, The Goldsmiths Company accessed November 2019.
 c) Jacksons Hallmarks edited by Ian Pickford 1991, Reprinted 2010, page 37
 d) Oral, Shirley Pope



102



102A Reverse



102B Hallmark

103 PROCESSIONAL CROSS Ph

1 **A - Processional Cross:** A patée style +cross with sunburst and cylindrical, flaring arms. The three upper arms terminate in flattened ends at the outer edges and in four, short metal rods holding a flat, gold-coloured roundel with plain, silver coloured centre at the intersection. Projecting, gold-coloured, fluted rays at the angles. The shaft has an open end which fits over the top of the carrying pole. There are some scratches on the metal

B- Pole: The apex of the Pole has a brass, cylindrical fitting with flange for carrying the cross. The pole has an applied, circular, silver, inscription panel 75cm from the top of the pole. The lettering is 'outlined roman' style (ref b) (See Ph 103 B-E). It is hallmarked with a quatrefoil, a lion passant and a leopard's head uncrowned (see PH 103A Hallmark). The quatrefoil has the letters 'J W & Co Ld' incised. No date letter (ref c).

2 Cross - highly polished silver plate and silver gilt.

Pole - ebonised wood with sterling silver panel, Cylinder and Flange - brass

3 Cross - 1985

Pole - 1952 (ref a)

4 Cross - h. 64.5 x w. 39.4cm

Pole - h. 148 x circum 9cm

Brass Cylinder - h. 7 x circum 8.5cm

5 -

6 J.Wipple and Co Ltd of 11, Tufton Street, Westminster SW1

7 The March 1985 PCC minutes refer 'with great sadness' to the 'theft of the top section of our Processional Cross on Saturday, 13th April [1984]. The cross and pole made of ebonised wood inlaid with silver, was presented to the Church in memory of Reginald Octavius Fellowes and his wife, Florence Percy. They lived at Brooklawn and it was given by their son [Colonel] Percy Alwyne Fellowes in 1952. Approval for this unusual design of cross had been sought by means of a petition for a Faculty 1952. This was approved. The current, replacement, all-metal cross was purchased by the Church in 1985.

8 -

9

THIS CROSS REPLACES THE
ORIGINAL DONATED IN MEMORY OF
REGINALD AND FLORENCE FELLOWES
STOLEN IN 1985

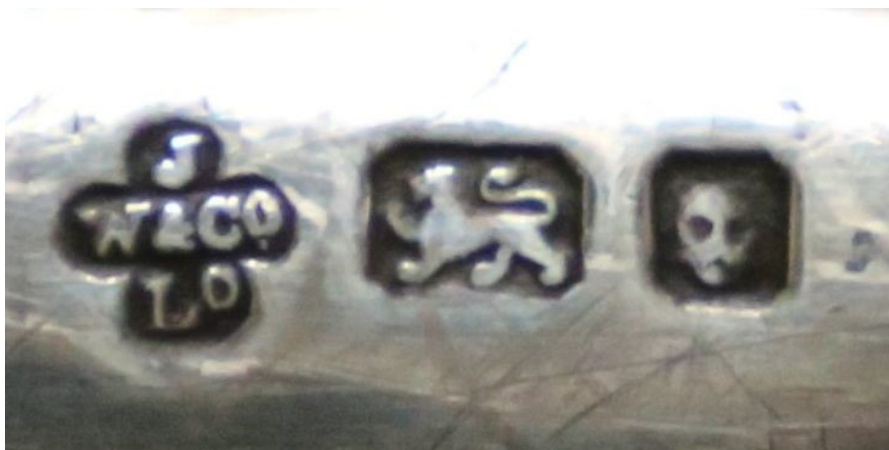
10 a) WSRO PAR 131/4/25 Faculty 09 July 1952

b) Inside Churches 1993 ed., Pages 49,82,92, 102,121,122

c) The Librarian, The Goldsmiths Company



103



103A Hallmark



103 B-E

104 BAPTISMAL SHELL Ph

- 1 Silver shell with flat, shaped handle at right angles to the shell and overlaid metal aliséé cross (ref b) at apex of handle. There is a silver plate mark on the underside of the handle.
- 2 Silver plate.
- 3 -
- 4 h. 13 x w. 9.5cm
- 5 -
- 6 Kevin Mayhew, Church Suppliers (ref a)
- 7 'Markings on silver plate are imitating British silver hallmarks (ref c). This shell, used for pouring baptismal water replaced Item 102 (ref a).
- 8 Mr David Burt (ref a)
- 9 -
- 10 a) Oral -Shirley Pope
b) Inside Churches 1993 ed. P50.
c) Internet research - British Silver Hallmarks



104



104A

105 PAIR OF CHALICES Ph

- 1 Two polished chalices. The plain conical bowl of one chalice (105a) has a gilded interior and there is a small dent in the side of the bowl. The plain conical bowl of the other chalice (105b) has been regilded and is in good condition. Their trumpet shaped stems each have a compressed knot. Each has a shallow, stepped, circular foot. There is no hallmark on either chalice.
- 2 Silver plate and gilt.
- 3 -
- 4 Chalice 105a h. 16 x diam. 10.2cm, Weight: 291 grams
Chalice 105b h. 16.2 x diam 10.5cm, Weight: 385 grams
- 5 -
- 6 -
- 7 -
- 8 -
- 9 -
- 10 -



a

105

b

106 PATEN Ph

- 1 Round, plate paten with no decoration. Some damage with scratching on both sides and dents in rim.
- 2 Silver Plate
- 3 -
- 4 Diam. 16.1cm
- 5-10 -



106

107 CIBORIUM Ph

- 1 A metal hemispherical bowl, internally gilded, with Greek Key decoration at the rim. The side of bowl is engraved in copper plate script with a memorial inscription. A cylindrical stem with a hemispherical knot above a plain high circular foot stepped at the base. Lid surmounted by a Canterbury cross (ref a).
Condition 2 dents on bowl
- 2 Silver plate (epns)
- 3 -
- 4 Bowl h.12.7 cm diam. 9.8 cm
Base diam. 10cm
Lid diam. 9.00cm h. 8.00cm
- 5 -
- 6 -
- 7 -
- 8 Easter 1990 (ref b & c)
- 9 In loving memory of William and Ivy Stevens
18/4/63 20/11/89
From Catherine, Peter and Christopher
Dedicated Easter 1990
- 10 a) Inside Churches - 1993 page 51
b) Oral, Shirley Pope
c) Terrier page 16



107A



108 CIBORIUM Ph

- 1 Ciborium for reserved sacrament (ref a). A small plain metal ciborium with hemispherical bowl, parcel gilt, plain cover surmounted by a Patée Formée cross (ref b). This is joined to a short stem which has a compressed ring above a plain knot above a circular foot stepped at the base (ref c).
- 2 Silver Plate
- 3 -
- 4 h. 18cm (ciborium and lid to top of cross)
h. 13.5 x diam 8.7cm (open)
- 5-9 -
- 10 a) Oral Shirley Pope
b) Inside Churches 2001 p 50
c) Inside Churches 2001 p 114



109 **WAFER BOXES** Ph

Vestry

- 1 A - Rectangular box having a removeable grid inside for holding gluten free wafers. This grid has rectangular metal handles at each ends and 4 rectangular slots. The flat lid has a central yellow coloured Celtic style ornamental cross, the cross and nimbus being represented by engraved lines (ref a). The base is of the box is slightly larger than the grid. Made in England mark under the base. The box has rectangular feet which have rounded outer corners. The silver plate is worn on the underside of the feet revealing the brass core with a small horseshoe shaped 'Made in England button centred between the back feet on the edge of the box. This box has an inscription on one side in Latin script. (Ph 109A Inscription)

B – Rectangular box having a grid inside for holding wafers. The box is worn and the brass core is obvious. The gilded grid has 5 rectangular slots which hold the peoples' wafers. The lid is slightly domed with rounded shoulders, with a finely engraved Patonce Cross design (ref b) just visible in the photograph and a plain base, which is slightly larger than the internal grid. The box has small ball feet.

- 2 A - Silver plate with a brass core.
B - Silver plate with a brass core, the grid is gilded.

3 -

- 4 A – h. 3.4cm overall. Lid l. 8.5 x h. 2.4 x w. 4.8cm. Base l. 8.8 x h. 2.9 x w. 5.00cm. Grid (handles) l. 8.0 x h. 3.0 x w. 4.2cm

B – Base l. 10.5 x h. 3.6 x w. 5.2cm. Top l. 9.5 x h. 2.5 x w. 4.2. Wafer Holder l. 9.5 x w. 4.1cm.

5 -

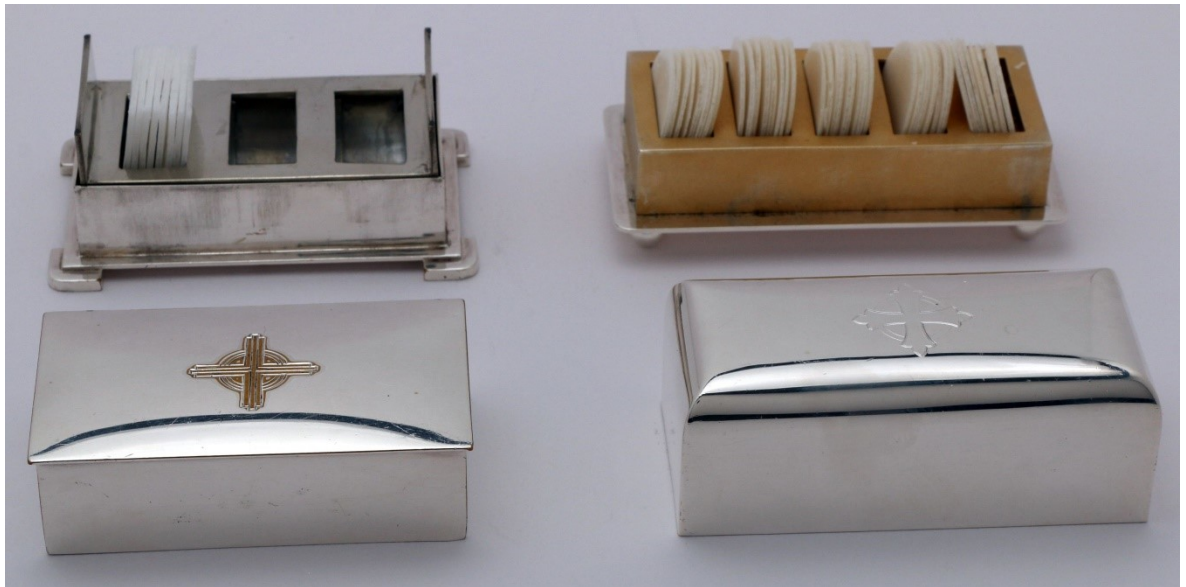
6 -

- 7 B – This wafer box replaced an earlier one which was in memory of Evelyn Travis Constable which was stolen on 26 February 2006 (ref c and d)

8 -

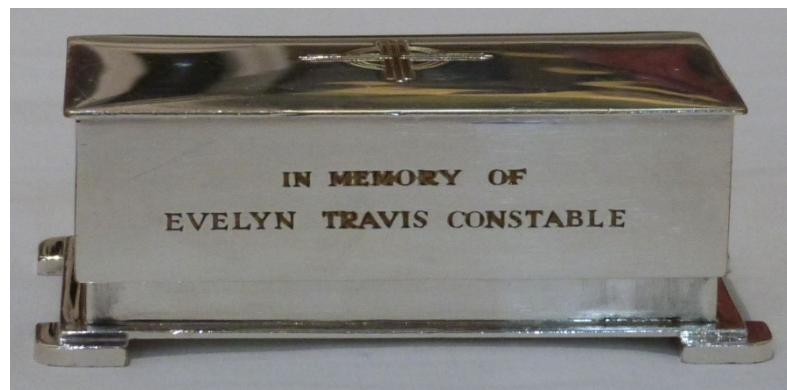
9 A – IN MEMORY OF / EVELYN TRAVIS CONSTABLE

- 10 a) websites: Shutterstock inc. and Wikipedia
b) Inside Churches 2001 p50
c) Oral Shirley Pope
d) Terrier p16



109A

109B



109A Inscription



109A feet

110 CHRISMATORY OR STOCK FOR HOLY OILS Ph

- 1 A cylindrical, yellow metal container or triple stock for holding the 3 Holy Oils (ref a). It has three compartments which unscrew. Each section is engraved with three letters to identify purpose: namely CAT; INF; CHR (ref b) in Outlined Clarendon font (ref c). The shape of an ancient oil lamp is engraved on the lid of the stock, a brass core showing through a dark plating. There is no hallmark. The compartments are scratched and worn.



110

- 2 Gold coloured plate with silver plated lid (ref d)
 3 -
 4 h. 1.7 cm; Diam. 4.5 cm,(for each section). Overall h. 5.1cm
 5 -
 6 -
 7 The initials on each compartment of the cylinder refer to the holy oil contained inside. These are:- CAT for Oleum Catechumens, which is used in pre-baptismal anointing; INF for oleum infirmorum or oil for the sick or dying; CHR for sacred chrism, made of olive oil, generally perfumed with balsam and used in ordinations, confirmations and dedications of altars and churches.(ref b). This triple holy oil stock is for use by the clergy for carrying out their ministry.(refs a & b). The oil lamp was derived and modified from the ancient Egyptian ankh symbol or key of life and is also referred to as the 'lamp of knowledge with its eternal flame (ref b).
 8 -
 9 -
 10 a) Oral - Shirley Pope
 b) Internet search including Website - Wikipedia
 c) Inside churches 1993 Ed. P82
 d) Website - Vanpoules

111 ALTAR CROSS Ph

- 1 A yellow metal Altar Cross with a heavy ornamental conical base surmounted by a cross Aiguisé (ref a). Each arm finishes in a stylised quatrefoil which has at the centre a 6 petalled flower with a central purple glass cabochon. An engraved line follows the shape of the arms forming a ribbon on the arms. Similar quatrefoils at the top of the vertical arm and above the stepped flange. A sunburst at the intersection of the arms has a clear glass cabochon at the centre of a barbed quatrefoil. Stepped flanges join the cross to the cylindrical stem and to the high conical stepped foot. The conical foot is decorated with fish scale motifs divided by lines from a central section of pierced patée crosses in 3 equally spaced roundels. The lowest section has equally spaced vertical lines. The base has four ball feet and is attached by a bolt underneath. There are scratches and blemishes in the metal. The words 'St Mary Magdalene, Lyminster' are stamped on the back of the cross (ref b) (Ph111A).
- 2 Brass
- 3 -
- 4 h. 66.5 x w. 30cm
h. cross (above the arms) 13.5 cm
h. cross (below the arms) 27 cm
Diam of base = 17cm; narrowing upwards to Diam of 6cm.
- 5-8 -
- 9 St Mary Magdalene
- 10 a) Inside Churches 1993 page 50
b) Inside Churches 1993 pages 90,123



111



111A

112 BOOKSTAND Ph

Sanctuary, Altar

- 1 Pedestal type missal or bookstand. On the book plate of the brass bookstand there is an inscribed sacred monogram, IHC, in gothic script with decoration and flourishing, on a stippled ground of concentric circles, in the centre of a double border. The border has 8 stippled lozenges and 4



which have brass rivets attaching the book plate to the stand. Surrounding this ring are pierced cusped trefoils, at the top, bottom and each side. At the corners of the bookstand there are large pierced shapes of fleur de lys. At the foot of the bookstand above the scalloped bookstand ledge there is an inscription in gothic script, the inscription starts and finishes with a small engraved maltese cross, both are worn (ref a) The bookstand has a brass hinged stand which is fluted and waisted beginning with a wrythen or spiralling knot (ref b). This finishes with a fluted base, the base comprising 6 leaf shapes.

Fluted base with words 'Cox and Sons, London'. Engraved Gothic script in memory.

- 2 Brass

3 -

- 4 Book plate h. 25.5 x w. 35.5cm

Scalloped ledge 3.5cm deep at the widest part

base and stand. h. 32.5cm

stand 4.5cm at narrowest point

base w.19.5 cm

5 -

- 6 Cox and Sons, London

- 7 Provided by the parishioners at a cost of £42. (ref c and e). Date of presentation to the Church April 19 1931 (ref d).

8 -

- 9 + In memory of Henry Durnford who died / while exploring in South America / July 13th 1878 +

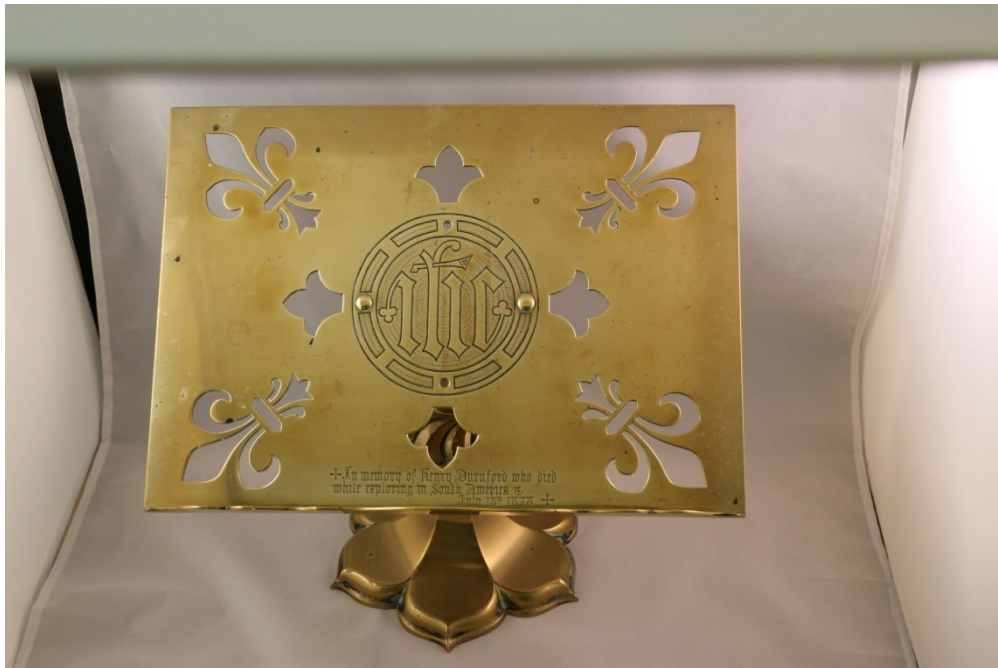
- 10 a) website: All Crosses – Seiyaku

b) Inside Churches 2001 p83, 91, 125

c) From framed list of church improvements 1880 to 1896

d) WSRO 131/4/6 Lyminster Parish Record April 19th 1931

e) Lyminster Parish Church, compiled by E Carleton Holmes 1906



112A



112B

113 CHANDELIER Ph**Chancel**

- 1 Brass Chandelier with trefoil hanging loop. Hung on a rectangular link chain made of iron. The ornate chandelier has a shaft of ball and baluster turnings, finishing in a pendant finial. There are 3 tiers of curving branches. The top tier of six branches of circular section, finish in a brass flame. The 2 lower tiers of 6 branches of circular section finish with 12 candle holders. The branches have 2 opposed curves with curved mouldings, the inner end forms an open spiral and the outer end is everted. Tear drop decorations hang from the branches on the 2 lower tiers (ref a) possibly Dutch (ref b).
- 2 Wrought iron chain, brass chandelier
- 3 -
- 4 Overall l. 90 x w. 75cm at widest part
Chain: l. 350cm, Links 5.0cm
- 5-6 -
- 7 "18 July 1929 request to erect a brass chandelier authorised. An anonymous gift to

the Parish to be hung in the Chancel. In January 1968 Mr Dickens arranged for the chandelier in the Sanctuary (sic) to be taken down, cleaned and repaired. He took it to London. It was back in time for the Christmas festivities" (ref c). Faculty granted 18 July 1929 (ref d).

8-9 -

10 a) Inside churches 2001 p133

b) Terrier

c) 1965 to 1985 extracts from PCC minutes by Eileen Satterford p3

d) WSRO EP1/40 No 1671 Lyminster Faculty



113

114 EWER Ph

Vestry

- 1 Tall, tapering, conical brass ewer with a hammered finish on the body of the jug; soldered seam running down the back, the lip is smooth and soldered to the body. A standard handle with a soldered seam down the inside is riveted to the body below the lip. The base is stamped Made England JSS&S solid brass and a figure 3 indicating 3 pint capacity.
- 2 Brass
- 3 -
- 4 h. 26.5cm, diam of base 14cm
Handle h. 14cm
Capacity 3 pints (ref b)
- 5 -
- 6 JS&S made in England. Joseph Sankey and Sons, Bilston, Staffordshire (ref b)
- 7 The manufacturer operated from 1890 to 1932 (ref a)
- 8 David Burt, former vicar (ref c) 2006 to 2011 (ref d)
- 9 -
- 10 a) website Old copper
b) website English metalware
c) oral, Shirley Pope
d) Framed list of vicars of Lyminster Church (See Paintings 518)



114



114A

115 CANDLESTICKS 2 (OIL FILLED) Ph**Vestry**

- 1 Pair of large candlesticks, for use with oil filled candles. Nozzle for holding candle, drip tray has a well on a distinct neck. Tapering stem, narrower at the top, plain flange at the top, 2 more plain flanges lower down, the stem then narrows to the foot. A high domed, bell shaped foot spreading at the base all made of yellow metal.
- 2 Brass
- 3 -
- 4 total h. 30.5cm, stem 16.0cm, base h. 11.0cm, diam 20.5 cm, diam of drip tray 15.5cm, nozzle h. 4.5cm, diam 5.50cm
- 5-10 -



115

116 CANDLESTICKS 2 Ph**Vestry**

- 1 A pair of yellow metal candlesticks, which are at present unused. They have a trumpet shaped sconce on a short hexagonal baluster shape column, this surmounts an inverted hexagonal baluster shape above a multi knotted stem. Beneath this is a circular moulded spreading, which has indents on the top layer. This is mounted on a circular base with incised circular groove. Slight damage on base.

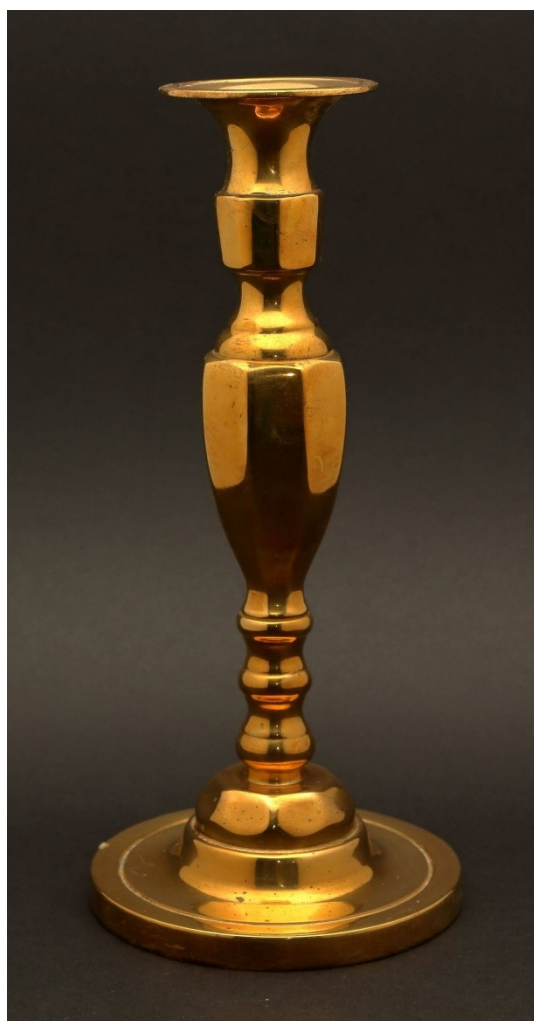
2 Brass

3 -

4 h.27 cm, w. top 6.0 cm w. base 11.2cm

5 -

6-10 -



117 CANDLE EXTINGUISHERS (2) Ph**Vestry**

- 1 A – A brass cone shaped candle extinguisher with rolled edge and alisée patée cross finial. Bent cylindrical taper- holder attached by brass ferrule to an oak stem (ref a).
- B – A brass cone shaped candle extinguisher with rolled edge and alisée patée cross finial. Bent cylindrical taper- holder attached by brass ferrule to an oak stem which is shorter than A (ref a).
- 2 Brass and oak
- 3 -
- 4 A - Height of extinguisher = 15cm; Diameter = 3.75cm; Height and width of cross = 2.5cm. Height of taper holder = 13cm; Length of wooden pole = 195cm
- B - Same as for extinguisher A except that the overall length = 92cm
- 5-9 -
- 10 a) Inside Churches 1993 Ed. P50, 126



117A



117B

118 COLLECTION PLATE Ph

Vestry

- 1 Yellow metal plate. In the well of the plate, there is a six petalled flower with six smaller petals inside and a hatched circle in the centre. Surrounding the flower are 2 triangles forming a 6 pointed star, the spaces within are hatched. This is surrounded by a 6 lobed hatched area forming a flower shape and a cusped border. Outside this is a continuous ring of cusped trefoil shapes and further hatching. The rim of the plate has engraved in Latin script 'He that hath pity upon the poor lendeth unto the Lord' in Capital Latin script, this has a dark hatched background and diamonds between the words, ending with a patée formée cross after "Lord " (ref a).
Damaged condition: Some dents on the rim
- 2 Brass
- 3 -
- 4 Diam. 29.7cm
- 5-6 -
- 7 The previous alms plate was stolen and was replaced in January 1965 by a gift from Mr D Hill (ref b)
- 8 Mr D Hill 08 January 1965 April 19 1931 (ref b)
- 9 HE THAT HATH PITY UPON THE POOR LENDETH UNTO THE LORD
- 10 a) Inside Churches 2001 p50
b) WSRO PAR 131/14/3 1965



118

119 COMMUNION RAILS Ph**Sanctuary**

- 1 The communion rails with telescopic rods on both sides to close the gap, are made of brass and are mounted on 4 wrought iron standards fixed to dark wooden plinths. The standards are uprights of square section wrought iron with decoration. On each standard there are 3 rectangular collars made of wrought iron and painted gold and 8 circular, black painted with gold centre rings 1 cm in depth along the 2 top sections on the east and west sides, the section at the foot of each standard has incised zig zag decoration and 2 lines. There is another square collar of iron, which is painted gold and black at the base of each standard. Coming from the top rectangular collar on these standards at the ends of the rails on the north and south sides are ornate cast iron ribbon end scrolls which act as further support for the brass rails. The centre part of the ribbon end scrolls are tendril ornaments which are painted gold. The standards in the centre ends of both sides have double ribbon end scrolls. The brass rail is fixed to the north and south wall by a brass plate fastened with screws. The rails have rings of brass at each end (ref a).
- 2 Brass and Iron
- 3 -
- 4 Brass communion rails 2 sections each l. 172cm long, diam. 8cm.
Standards h. 52.75cm
2 telescopic rods each l. 47.5cm
- 5 -
- 6 -
- 7 These rails replaced rails put in at the time of the chancel restoration in 1883-84. Restoration fund set up and £654.13.6 raised in about 1931.
- 8 April 19th 1931 (ref a)
- 9 -
- 10 a) WSRO 131/4/6 Lyminster Parish Records April 19th 1931



119



119A



119B

120 CHURCH WARDENS' WANDS Ph**Nave**

- 1 **A** - A brass crown and patée cross finial attached to an oak stem by a trumpet-shaped brass ferrule with collet; a pair of engraved rings at base of ferrule.

B - shorter than A having a brass bishop's mitre and patée cross finial, attached to the oak stem by a trumpet-shaped brass ferrule with collet; a pair of engraved rings at base of ferrule.

The wands stand vertically in wooden cleats screwed into the end of two pews located in the nave. Wand A is currently located at the aisle side of the first row immediately behind the pulpit. Wand B currently located at the aisle end of the fifth pew (refs a & b).

- 2 Brass and Oak

- 3 1966 (ref c).

- 4 A Height of Crown finial = 7cm; Width of Crown finial = 7cm

B Height of Mitre finial = 7cm; Width of Mitre finial = 7cm

A Length of ferrule = 9cm;

B Length of ferrule = 8.2cm

A Stem Length = 166.5 cm;

B Stem length = 154 cm

- 5-6 -

- 7 In November 1965 Mr Ferguson left a small sum to the Parish. The Vicar proposed that this was used to obtain 2 x church wands. Agreed by PCC and in January 1966 two wands were purchased (ref c)

- 8-9 -

- 10 a) Inside Churches 1993 Ed P 50,126

b) Oral - Shirley Pope

c) WSRO PAR 131/14/3 PCC Minutes 1960-1966



120A



120B

121 PASCAL CANDLE STAND**Sanctuary**

- 1 A Pascal candle-stand with tall, round, nozzle and flat, circular grease-pan; the cylindrical stem on a wrought iron tripod base formed of splayed legs with flattened ribbon ends (ref b). Attached to the stem beneath the grease-pan and above the tripod are two pairs of scrolled brackets, the upper pair having two twists. It is used for holding decorated candles at Christmas, Easter and other special occasions, when it is placed on the floor near the Altar (ref a).
- 2 Cast iron
- 3 -
- 4 Overall Height of stand = 130 cm.
Circumference of stem = 20cm.
Circumference of grease pan = 41 cm
- 5 Philip Pole (ref a)
- 6 Wippell & Co Ltd. London (ref a)
- 7 -
- 8 -
- 9 -
- 10 a) Oral, Shirley Pope
b) Inside Churches 1993 Ed P87, 130

122 CHURCH OUTER DOOR Ph**Porch**

- 1 The North Door at the entrance to the church porch has a central, metal section of grill design which was introduced to improve security (ref b).. The outer, metal frame is bolted into the older, oak frame, which in turn, is secured to the porch stonework by means of upper and lower heavy, cast iron hinges. The grill has 5 full-length, flat, mild steel metal bars intersecting with 5 horizontal flat bars. The upper, outer, vertical bars are arched to fit into the arched oak frame. Vertical iron rods have been fixed through all the horizontal bars. (ref c). The grill has five horizontal sections. The top, second and fifth sections are without ornamentation. The third, central section has four copper, shield-shaped, repoussée panels



or badges (ref d) which have been chastened and embossed (ref d). These are secured to 2mm thick iron plates welded to upright bars and depict from left to right:
A - crown over a corvette facing left on waves over a laurel wreath. 'F386' is chased into the metal below the corvette's main superstructure.

B - sheltie dog in profile, facing left and standing on tufts of grass.

C - fire helmet surmounting a fire engine facing left over a sunburst.

D - ornamental crown over an anchor framed by palm leaves.

Each shield has a flat iron frame, painted with gold paint, which has weathered.

Each shield is fixed to the grill frame by five iron rivets.

The fourth section has a horizontal line of iron roundels, painted black.

On the inner, porch side, a iron plate with large rings is bolted onto the wooden frame to enable the sliding bolt and plain iron grasp handle to secure the door. This is positioned just above the level of the badges. There are five iron rivets at the top right hand side of the door.

2 Grill - mild steel

Badges - copper and iron

Bolt and Padlock - steel

3 1999/2000 (ref b and c)

4 The Door: Height = 2019mm. Width = 1,880mm Depth of metal = 25 mm;

Mild steel flat bar drilled and screwed to oak frame: 25mm x 10mm

Four horizontal square 'stiffeners': width = 25mm (all)

Diam of upright bars/vertical rods = 12mm @ 100mm

Panels/Badges: Height = 26 cm (longest point) Width = 19 cm Roundels: Diam = 65mm fixed in 2 x 25mm square bars (ref c).

5 Alan J Burnett A.R.I.B.A. in association with Christian.Meheux (ref c)

6 Christian Meheux, Art Metalworker, Woodside Forge, Christchurch, Dorset BH23 8IA (ref c).

7 To improve security at the church following a spate of vandalism it was decided to have a memorial gate designed to be inserted within the framework of the existing wooden gate. The design would commemorate historic and memorial events within the parish. Faculty granted for replacement of metal security door 1999 (ref c)
The grillwork of the door is symbolic and has been designed and arranged around the memorial panels so as to depict the sun rising at the uppermost part of the gate and with symbolic memorial poppies (the roundels) to the lower portion.

Panel A depicts a corvette (F386) commanded by parishioner and past incumbent, Douglas Satterford and is in memory of his wife Eileen.

Panel B depicting the Sheltie dog is in memory of Grace Aldridge, the former verger, who was tragically killed by a herd of cows while walking her dog in the fields near the Church.

Panel C depicting the fire engine is in memory of fire officer and parishioner John Victor Channell, tragically killed in a car accident in Selsey.

Panel D depicting the insignia of the Merchant Navy (the anchor) is in memory of the two former husbands of parishioner, Esme Dyer.

The replacement door would be fitted with a substantial sliding bolt. The strength of the new frame was tested. Statement by Vicar John Slegg:- "To 'get' the door frame's ability to take the weight of the ironwork, we stood a twelve and a half stone man on the frame furthest from the hinges, while we opened and closed it. It opened and closed easily without warping in the slightest...." The final contribution from the Church Appeal Fund was £2,050(ref a, b, c e for all).

- 8 -
9 -
10 a) 'The Parish Church of St Mary Magdalene Lyminster - A Short Guide' by Rosemary Sisson.
b) WSRO CH146/99 Faculty for 'infilling existing open panel gate with a metal grid to improve Church security'
c) WSRO EP1/98/1, 1999
d) Inside Churches 1993 ed., Page 101
e) Oral Shirley Pope





122A



122B



122C



122D

123 TRIANGULAR GRILL ABOVE DOOR Ph**Porch**

- 1 Black painted mild steel grill (ref b) filling the 2 triangular sections in the wooden porch frame above the outer door. Each section consists of flat section metal bar to fit the triangular space and 10 vertical rods equally spaced along this. The whole is in poor condition having rusted.
- 2 Mild Steel
- 3 1999/2000 (see 122)
- 4 Each Triangle Section Base: l. 107 x h.(est) 120 cm
Bars diam 15mm, Triangular frame 25mm x 10mm flat section (ref b)
- 5-6 -
- 7 Faculty granted in Oct 1999 for the removal of the existing metal bars in the outer door and replacement with new (ref a and b)
- 8-9 -
- 10 a) Terrier
b) WSRO EP1/98/1 Faculty



123

124 GRILL Ph**Baptistry**

- 1 Large crescent shaped wrought iron grill. The grill is fitted into the stone archway at the top of the painted screen in the Baptistry (see Memorials 019 and Stonework 210). The whole is made of square section wrought iron rods. The semi circular framework is fitted into the stone arch above by wrought iron rods. The design is divided into 3 sections. The centre section is rectangular, the ends of the vertical bars finish in a decorative flattened twist, painted gold. A central vertical bar is twisted along its length and extends to fix the design into the framework and the wooden frame of the decorative screen below. The two sections at each side are a similar design, but smaller. The grill is also adjacent to the side of the Church organ. The grill was inserted after the new organ was fitted as an extra security measure after a vestry break in (ref a). Faculty granted Feb 1998 for the installation of metal security grill above the existing screen and redesign of stained glass panel. (ref b and c) funded by the Liardet family, Eton College and 3 charities (ref b).
- 2 Wrought Iron
- 3 1998
- 4 Height at largest part of the curve 91.5cm est. Width 205.5cm est.
- 5 Christian Meheux , Woodside Forge, 137, Burley Road, Bransgrove, Christchurch, Dorset (ref a)
- 6 -
- 7 -
- 8 -
- 9 -
- 10 a) Terrier
b) WSRO EP/1/98/1 C 187/97 Faculty 27th January 1998
c) WSRO CH187/97 PCC minutes July 9th 1996



125 FLOWER PLANTER Ph**Nave**

- 1 A rectangular, metal planter, painted black, holding a grey metal trough. The outer container has wrought iron scrollwork on all four sides: four pairs of scrolled brackets on longer sides and a single scroll bracket on shorter sides; four, circular metal pinheads at each upper corner covering metal pins which exit at each lower corner in the shape of metal stud feet with a nail/screw hole in the centre.
- 2 Wrought iron and cast iron.
- 3 -
- 4 Outer Planter: h. 29.5 x w. 77 x d. 15.5cm
Inner Trough: h. 20 x w. 74 x d. 13cm
- 5-6 -
- 7 Mrs Mercy Hunt who worked voluntarily as a cleaner in the church donated this item in the 1990's in memory of her mother (refs a & b).
- 8 Mrs Mercy Hunt in the 1990's.
- 9 -
- 10 a) Oral - Mrs Karen Dales, Church Committee Member
b) Oral - Mrs Diana Hepbury, Church Flower Arranger
c) Inside Churches 1993 Ed. P90, 104, 130



125

126 SIX FLOWER/PLANT STANDS Phs

Tower Vestry

- 1 Freestanding metal flower/plant holders each having a circular, plain metal bowl fixed to a long thin rod in turn fixed to a plain circular metal base and painted black. There are seven of these, all of different heights stored in the cupboard by the Bell Tower steps. Examples Ph 126A-F

A - Round metal bowl secured to a metal stem by a metal plate. The outer cylindrical stem has a hairpin-shaped handle for height adjustment. It is supported by a tripod of three pairs of scrolled bracket feet, each pair welded together and united to the stem by riveted collars.(ref d)

B - A round, metal bowl on a metal stem supported by a wrought iron tripod of right-angled legs with stud feet.(ref d) Four scrolled brackets spring from the sides of the bowl and the top of the stem. A pair of scrolled brackets are welded to the centre of the stem. Three scrolled brackets are fixed to the lower part of the stem and rest on the top of each foot of the tripod. The bowl is dented.

C - This stand is identical in style to B, but is taller.

D - A slender, adjustable stand with a circular metal bowl on a circular metal stem inside a cylindrical fixed stem with a right-angled height adjuster. A pair of scrolled brackets spring from the lower stem, which is supported by a wrought iron tripod formed of broken scrolled legs with ribbon ends. (ref d) Additional stability is provided by 3 curved metal bars welded just above the ribbon ends. A plastic bowl rests inside the metal bowl.

E - A large, circular metal bowl on a square metal stem supported by a tripod of three curved wrought iron feet with ribbon ends.(ref d)

F - An adjustable metal stand with circular bowl over a cylindrical metal stem inside a fixed metal stem with height adjuster pin. Support is provided by three pairs of long and short straight, metal rods with bolt ends (ref d). The bolt ends of the long rods are welded to the stand below the height adjuster. The short rods are welded to the stand just above the end of the stem. The pairs are fused together just above ground

- 2 Cast iron, wrought iron, plastic

- 3 1968 and 1969 (3 stands)

- | | | |
|-----|---------------------------|--|
| 4 A | Overall* Height = 82 cm | Diam of bowl = 24 cm (Height adjuster) |
| B | Overall Height = 89 cm | Diam of Bowl = 21 cm |
| C | Overall Height = 108.5 cm | Diam of Bowl = 21 cm |
| D | Overall Height = 115 cm | Diam of Bowl = 25 cm (Height adjuster) |
| E | Overall Height = 108 cm | Diam of Bowl = 28.2 cm |
| F. | Overall Height = 98.5 cm | Diam of Bowl = 21 cm (Height adjuster) |

*Overall Height is the measurement from top of the bowl to the ground.

- 5 -

- 6 Vanpoules Ltd, Crawley

- 7 The Church Minutes of January 1968 record that:- 'Grateful thanks was given to Mrs Hunt for a very handsome wrought iron flower standA flower rota was started and many offers came from the congregation to arrange the flowers and to clean the brass.' (ref c). There is a record in the October 1969 P.C.C. minutes to 'purchase two wrought iron flower stands to decorate the pulpit and lectern.'(ref c). All plant stands and the planter were sent to 'Penfolds' of Barnham, West Sussex in 2015 to be stripped and repainted black. (Church Records and minutes plus ref b)

- 8-9 -
 10 a) Oral - Shirley Pope
 b) Oral - Diana Hepburn, Church Flower Arranger
 c) Extracts from Church Minutes of 1968 and 1969
 d) Inside Churches 1993 Ed P130, 90



A



B



C



D



E



F

127 COLD WATER STORAGE TANK

Bell Tower

- 1 A rectangular metal water trough located at the very top of the bell tower.
 2 Cast iron.
 3-5 -
 6 Ockenden – Arun Bland, Littlehampton
 7-10 -

BELLS: There is a ring of 6 bells E, D, C, B, A and G (tenor).

128A A BELL FRAME Ph

Bell Tower

- 1 Iron Frame with ball bearings. Open cast framework cut off triangle cross section (Ph (ii)). (See sketch on the bell form) (ref a). Six painted bell wheels of differing diameter, depending on the bell weight. (Ph (i)).
- 2 Frame Cast Iron (ref a). Clappers wrought iron (Ph(iii)), Headstocks seasoned elm fitted with steel gudgeons, pulleys turned hardwood (ref e).
- 3 1937 (ref b)
- 4 -
- 5 -
- 6 Mears and Stainbank of Whitechapel Bell Foundry 32 and 34 Whitechapel Road London E1
- 7 New Iron frame put in with ball bearings etc by Mears and Stainbank in 1937(ref b). Replaced wooden frame with iron frame (ref c, e) self-aligning ball bearings fitted in dust proof housings, existing wheels overhauled and fitted with new braces, new pulleys of turned hardwood running on enclosed ball bearings (ref e). In 1937 money raised by a legacy and donations (ref d,e).
1759 - Bells E, D, B
1887 Bells C, A
1949 Bell G
See Bell form pp57-59
- 8 -
- 9 -
- 10 a) Oral – David Hall, Bell Tower Captain
b) WSRO PAR 131/4/6 repairs to Bells
c) WSRO PAR 131/4/21 Faculty 03 March 1937
d) WSRO PAR 131/4/5 1937 Parish Minutes
e) WSRO EP/1/40/Lyminster Faculty 28 Dec 1936



128A (i)



128 (ii)

128B BELL NO 1 – E Ph**Bell Tower**

- 1 Bell 1, note E. Casting good crown staple independent machine tuned, steel headstocks, wooden wheels (see sketch on the bell form),- modern clappers. The Bells are swung. This Bell is hung on the west side north of Bell 6 note G -Tenor (ref d).
- 2 The bell is bell metal, the frame is cast iron (ref d), clappers are wrought iron. Headstocks are seasoned elm fitted with steel gudgeons. Pulleys of turned hardwood (ref g).
- 3 1759 (see 9 below)
- 4 Reputed weight 4 cwt 2 qu 3 lb (ref d). Diam 28 inches (ref c) pulley wheel diam. 148cm
- 5 -
- 6 Lester and Pack of London (ref a)
- 7 1887 Bells new fittings fitted, bells quarter turned and tuned and rehung (ref a,f). 1937 Bells quarter turned and tuned and old bells repaired (ref b, a, g), headstocks fitted with steel gudgeons, wheels fitted with new braces. Works funded by a legacy and donations (ref g). 1965 Bells in need of an overhaul, the clappers in bad condition, head bell ringer asked to obtain estimate no other mention in PCC minutes (ref e).
- 8 -
- 9 Lester and Pack of London fecit 1759
- 10 a) WSRO Par 131/9/1 Church Account Books 1887
b) WSRO Par 131/4/21 Faculty 03 March 1937
c) Dove's Guide for Bell Ringers -website
d) Oral David Hall Bell Tower Captain
e) WSRO PAR 131/14/3 March 5th 1965 PCC minute
f) Extracts from the Lyminster Parish news Magazine March 1887 to Sept 1887
g) WSRO EP/1/40 Lyminster Faculty 28 Dec 1936



128B

128C BELL NO 2 - D Ph**Bell Tower**

- 1 Bell 2 note D Casting good, crown staple independent machine tuned, steel headstocks, wooden wheels (see sketch on the bell form), - modern clappers. The Bells are swung. This Bell is hung on the north side of Bell 1 note E (ref d).
- 2 The bell is bell metal, the frame is cast iron (ref d), clappers are wrought iron (ref g.) Headstocks are seasoned elm fitted with steel gudgeons. Pulleys of turned hardwood (ref e).
- 3 1759 (see 9 below)
- 4 Reputed weight 5 cwt 0qu 2 lb (ref c). Diam 30 inches (ref c), pulley wheel diam. 152cm.
- 5 -
- 6 Lester and Pack of London (ref a).
- 7 1887 Bells new fittings fitted, bells quarter turned and tuned and rehung (ref a, f)
1937 Bells quarter turned, tuned and generally repaired (ref b) headstocks fitted with steel gudgeons, wheels fitted with new braces. Works funded by a legacy and donations (ref g).
1965 Bells in need of an overhaul as the clappers in bad condition, head bell ringer asked to obtain estimate, no other mention in PCC minutes (ref e).
- 8 -
- 9 KIND HEAVEN INCREASE THEIR BOUNTEOUS STORE AND BLESS
THEIR SOULS FOR EVERMORE / LESTER AND PACK FECIT 1759
- 10 a) WSRO PAR 131/9/1 Church Account Books 1887
b) WSRO PAR 131/4/21 Faculty 03 March 1937
c) Website - Dove's Guide for Bell Ringers
d) Oral David Hall, Bell Tower Captain
e) WSRO PAR 131/14/3 PCC Minutes March 05 1965
f) Extracts from Lyminster Parish News Magazine March 1887 to Sept 1887
g) WSRO EP/1/40 Lyminster 37/26 Faculty 28 Dec 1936



128C

128D BELL NO 3 – C**Bell Tower**

- 1 Bell 3 note C Casting good, crown staple independent machine tuned, steel headstocks, wooden wheels (see sketch on the bell form), modern clappers. The Bells are swung. This Bell is hung on the north side of Bell 2 Note D (ref e).
- 2 The bell is bell metal, the frame is cast iron (ref e), and clappers are wrought iron. Headstocks are seasoned elm fitted with steel gudgeons.(ref i) Pulleys of turned hardwood (ref i)
- 3 1887
- 4 Reputed weight 6 cwt 0 qu 0 lb (ref c)
Diam. 32 inches (ref c) pulley wheel 160cm
- 5 -
- 6 John Warner and Sons
- 7 1887 new bell cast and fitted (ref a,h) money raised by subscription (ref g,h).
1937 Bells quarter turned and tuned (ref b) all with headstocks, existing wheels overhauled and fitted with new braces, funded by a legacy and donations (ref i)
1965 Bells in need of an overhaul as the clappers in bad condition, head bell ringer asked to obtain estimate but no other mention in PCC minutes (ref f)
- 8 -
- 9 Peace and good neighbourhood John Warner and sons 1887
- 10 a) WSRO PAR 131/9/1 Church Account Books 1887
b) WSRO PAR 131/4/2 Faculty 03 March 1937
c) Website - Dove's Guide for Bell Ringers
d) Lyminster Parish and Church compiled by E Carlton Holmes 1906 page 24
e) Oral David Hall, Bell Tower Captain
f) WSRO PAR 131/14/3 PCC Minutes 05 March 1965
g) WSRO PAR 131/4/3 Parish Minutes 1887
h) Extracts from the Lyminster Parish News Magazine March 1887 to Sept 1887
i) WSRO EP/1/40 Lyminster Faculty 28 Dec 1936

128E BELL NO 4 – B Ph**Bell Tower**

- 1 Bell 4 note B casting good, crown staple independent machine tuned, steel headstocks, wooden wheels (see sketch on the bell form), modern clappers. The Bells are swung. This Bell is hung on the east side of the bell frame (ref e). The photograph 128E gives a date, 1950, when tenor bell recast and other bells reconditioned.
- 2 The bell is bell metal, the frame is cast iron (ref e). The bell wheel is wood, headstocks seasoned elm fitted with steel gudgeons, clappers wrought iron. Pulleys of turned hardwood (ref h)
- 3 1759 (see 9 below)
- 4 Reputed weight 6 cwt 0 qu 23 lb (ref d, g)
Diam. 33 inches, pulley wheel diam 160cm.
- 5 -
- 6 Lester and Pack

- 7 1887 bells provided with new fittings and quarter turned and rehung and the old frame strengthened (ref c, g)
1937 Bells quarter turned and tuned repairing for the old bells (ref a, b, h)
headstocks fitted with steel gudgeons, wheels fitted with new braces. Works funded by a legacy and donations.(ref h)
1965 Bells in need of an overhaul, as the clappers in bad condition, head bell ringer asked to obtain estimate no other mention in PCC minutes (ref.f)
- 8 -
- 9 LESTER AND PACK FECIT 1759
- 10 a) WSRO PAR 131/4/6 Inventory of Goods and Property 1938
b) WSRO PAR 131/4/21 Faculty 03 March 1937
c) WSRO PAR 131/9/1 Parish Church Account Books 1887
d) Dove's Guide for Bell Ringers - website
e) Oral David Hall, Bell Tower Captain
f) WSRO PAR 131/14/3 PCC Minutes 05 March 1965
g) Extracts from Lyminster Parish News Magazine March 1887 to Sept 1887
h) WSRO EP/1/40/ Lyminster Faculty 28 Dec 1936



128E

128F BELL NO 5 – A Ph

Bell Tower

- 1 Bell 5 note A Casting good, crown staple independent machine tuned, steel headstocks, wooden wheels (see sketch on the bell form), modern clappers. The Bells are swung. This Bell is hung on the SE below Bell 4 note B (ref g). Around the top of the bell it says 'Recast by John Warner and Sons 1887. Further inscription below (see 9)
- 2 The Bell is bell metal, the frame is cast iron (ref g) Wheel wood, clappers are wrought iron. Headstocks are seasoned elm fitted with steel gudgeons. (ref k) Pulleys of turned hardwood (ref k)
- 3 1887
- 4 Reputed weight 7cwt 2qu 19 lb (ref e)
Diam. 36 inches (ref e), pulley wheel diam. 160cm
- 5 -
- 6 John Warner and Sons
- 7 1887 and the old frame strengthened (ref c,f)
1887 It was known that the 5th bell was cracked, so it was replaced (ref c,d,f). The money was raised by parishioners (ref h).
1937 Bells quarter turned and tuned repairing for the old bells (ref a, b). Headstocks fitted with steel gudgeons, wheels fitted with new braces. Works funded by a legacy and donations.(ref k)
1965 Bells in need of an overhaul, the clappers in bad condition, head bell ringer asked to obtain estimate no other mention in PCC minutes(ref i).
- 8 -
- 9 GOD SAVE THE QUEEN. / BELLS RESTORED JUBILEE YEAR. / REVD
GERALD H MOOR VICAR / WM DUKES, / E. CARLTON HOLMES
CHURCHWARDENS
- 10 a) WSRO PAR 131/4/6 Inventory of Goods and Property 1938
b) WSRO PAR 131/4/21 Faculty 03 March 1937
c) WSRO PAR 131/9/1 Church Account Book 1887
d) WSRO PAR 131/4/3 Parish Minutes 1883
e) Website - Dove's Guide for Bell Ringers
f) Lyminster Parish and Church compiled by E. Carlton Holmes 1906 page 24
g) Oral David Hall Bell Tower Captain
h) Framed list of Church improvements 1880 to 1896
i) WSRO PAR 131/14/3 PCC Minutes 05 March 1965
j) Extracts from the Lyminster Parish news Magazine March 1887 to Sept 1887
k) WSRO EP/1/40 Lyminster 37/26 Faculty 28 Dec 1936



128F

128G BELL NO 6 – G Ph**Bell Tower**

- 1 Bell 6 Tenor note G. Casting good, crown staple independent machine tuned, steel headstocks, wooden wheels (see sketch on the bell form), modern clappers. The Bells are swung. This Bell is hung on the south side of the Bell 1 note E (ref c). The visible wording around the top of the bell reads HARVEY & W^M READING CHURCHWARDENS (see 7 below). The inscription can be seen clearly on a photograph (see Paintings etc. 512C).
- 2 The bell is bell metal, the frame is cast iron (ref c). Pulley wheel wood. Headstocks seasoned elm with steel gudgeons, clapper wrought iron (ref f).
- 3 1949 (ref a, e)
- 4 Reputed weight 9 cwt 2qu 12lb (ref b).
Diam 38 inches (ref b), Pulley wheel diam. 174cm
- 5 -
- 6 Mears and Stainbank, Whitechapel Bell Foundry 32 to 34 Whitechapel Road London E1.
- 7 1937 new bell frame, quarter turning and repair of old bells, headstocks fitted with steel gudgeons, wheels fitted with new braces. Works funded by a legacy and donations (ref f)
1949 Recasting of the Tenor Bell in accordance with the specification from Messrs Mears and Stainbank of Whitechapel Bell Foundry 32 to 34 Whitechapel Road London E1a) estimate cost £127 (ref a, e)
1965 Bells in need of an overhaul, the clappers in bad condition, head bell ringer asked to obtain estimate no other mention in PCC minutes (ref d)
In the record the original 1759 bell had an inscription which included The Revd David Gittings, vicar, John Harvey, Wm Reading Churchwardens, Thos Duke, overseer (ref a).
- 8 -
- 9 RECAST 1950 IN MEMORY OF
STEPHEN P DUVAL. D.D.,O.B.E.
VICAR 1924-1947 (Mears and Stainbank) (ref a)
- 10 a) WSRO PAR 131/4/23 Faculty 24 March 1949
b) Website - Dove's Guide for Bell Ringers
c) Oral David Hall Bell Tower Captain
d) WSRO PAR 131/14/3 PCC Minutes 05 March 1965
e) WSRO EP/1/98/1 Lyminster 15 March 1949 Faculty for recasting Tenor bell
f) WSRO EP/1/40 Lyminster 1936 Faculty

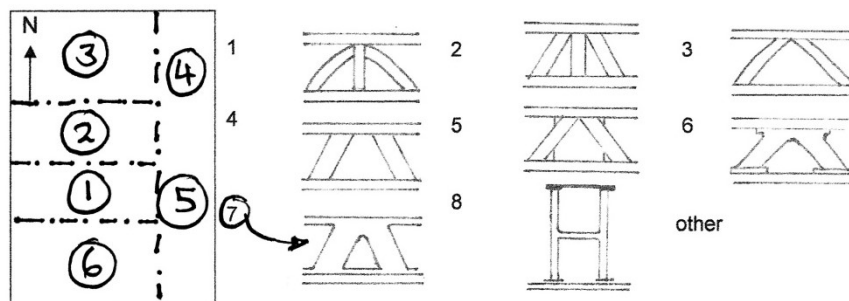


128G

BELLS


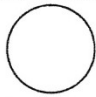




Dedication St. Mary Magdalene Place Lyminster W. Sussex
 Recorded by The Arts Society Arun Date Feb 2017
Helped by David Hall, Bell Tower Captain

BELL FRAME



MATERIAL ~~Timber~~ / Cast-Iron / ~~Steel~~

Inscription on Frame

	1	2	3	4	5	6	7	8
HEADSTOCKS								
Timber								
Cast-Iron								
Steel	✓	✓	✓	✓	✓	✓		
WHEELS								
	✓	✓	✓	✓	✓	✓		
Other								
Sketch the spokes								
								
Lever: Timber / Iron								
CLAPPERS								
								
Stirrup-top								
								
Wood-top								
								
Strap-top								
	✓	✓	✓	✓	✓	✓		
Modern								

USE: Swung / ~~chimed with hammers~~ / ~~Rope attached to Clappers~~ / ~~Derelict~~

BELL ①

Diameter 28 inches cm

NOTE E

REPUTED WEIGHT 4.2.3.
4cwt 2qrs 3lb
(1289.5lb)

Inscription

Lester and Pack of
London fecit 1759

CASTING: CROWN-STAPLE: TUNED:

Good ☒ Cast-in ☐ Machine ☒
 Average ☐ False ☐ Chisel ☐
 Rough ☐ Independent ☒ Skirted ☐

BELL ②

Diameter 30 inches cm

NOTE D

REPUTED WEIGHT 5cwt - 0 - 2lb
(1162.0 lbs)

Inscription

Kind Heaven increase their
bounteous store and bless
their souls for evermore
Lester and Pack fecit 1759

CASTING: CROWN-STAPLE: TUNED:

Good ☒ Cast-in ☐ Machine ☒
 Average ☐ False ☐ Chisel ☐
 Rough ☐ Independent ☒ Skirted ☐

BELL ③

Diameter 32 inches cm

NOTE C

REPUTED WEIGHT 6cwt. 0.0
(1033.5 lbs)

Inscription

Peace and good
neighbourhood
John Warner and sons 1887

CASTING: CROWN-STAPLE: TUNED:

Good ☒ Cast-in ☐ Machine ☒
 Average ☐ False ☐ Chisel ☐
 Rough ☐ Independent ☒ Skirted ☐

BELL ④

Diameter 33 inches cm

NOTE B

REPUTED WEIGHT 6.0.23
6cwt - 0 - 23 lbs
(973.5 lbs)

Inscription

Lester and Pack
fecit 1759

CASTING: CROWN-STAPLE: TUNED:

Good ☒ Cast-in ☐ Machine ☒
 Average ☐ False ☐ Chisel ☐
 Rough ☐ Independent ☒ Skirted ☐

BELL (5) Diameter 36 inches cm NOTE A REPUTED WEIGHT 7.2.19
 7cwt - 2qr - 19lb
 (870.526)

Inscription
 God Save the Queen. Bells
 restored Jubilee Year
 Revd Gerald H. Moor Vicar
 Wm Duke, E Carlton Holmes. Church wardens.

John Warner and Sons 1887

CASTING: CROWN-STAPLE: TUNED:
 Good ☒ Cast-in ☐ Machine ☒
 Average ☐ False ☐ Chisel ☐
 Rough ☐ Independent ☒ Skirted ☐

BELL (6) Diameter 38 inches cm NOTE G (Tenor) REPUTED WEIGHT
 9cwt - 2qr - 12lbs

Inscription
 Recast 1949 in memory of
 Stephen P. Duval DD, OBE Vicar
 1924 - 1947
 Mears and Stainbank

CASTING: CROWN-STAPLE: TUNED:
 Good ☒ Cast-in ☐ Machine ☒
 Average ☐ False ☐ Chisel ☐
 Rough ☐ Independent ☒ Skirted ☐

BELL Diameter cm NOTE REPUTED WEIGHT

Inscription

CASTING: CROWN-STAPLE: TUNED:
 Good ☐ Cast-in ☐ Machine ☐
 Average ☐ False ☐ Chisel ☐
 Rough ☐ Independent ☐ Skirted ☐

BELL Diameter cm NOTE REPUTED WEIGHT

Inscription

CASTING: CROWN-STAPLE: TUNED:
 Good ☐ Cast-in ☐ Machine ☐
 Average ☐ False ☐ Chisel ☐
 Rough ☐ Independent ☐ Skirted ☐